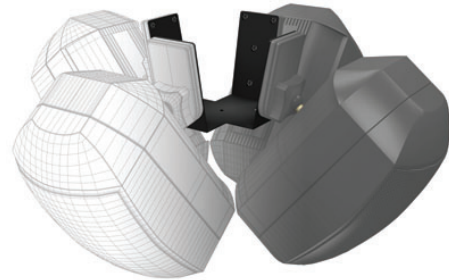


APart MASK
MASKWW - MASKWBL
W-BRACKET



The W-bracket makes it possible to install four MASK4 or MASK6 speakers back to back, suspended from the ceiling by an all-thread.

It can carry four MASK speakers of the same size and weight at an 90° angle from each other.

It is custom-designed to fit the base of the MASK 4/6 Intelli-Mount brackets, and allows the installer to fix the speakers in any spot necessary to obtain the ideal sound dispersion.

TECHNICAL SPECIFICATIONS

MASKWW
MASKWBL

White Color
Black Color

Packaging :

1 per box

Weight :

1 Kg net per pcs

Dimensions :

125 mm x 70 mm (sides)
155 mm x 70 mm (base)