

ARCAM

drDock

Connections and Quickstart Guide

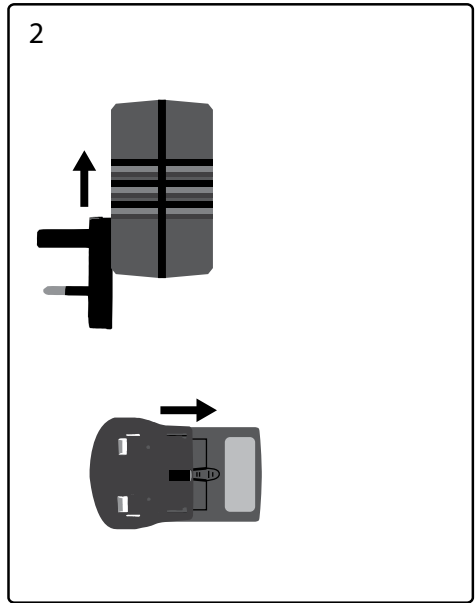
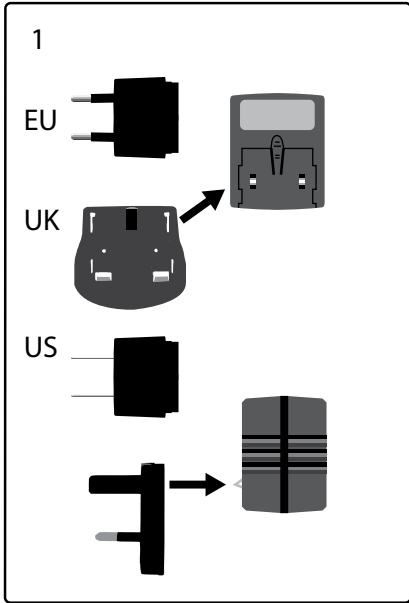
drDock

ARCAM

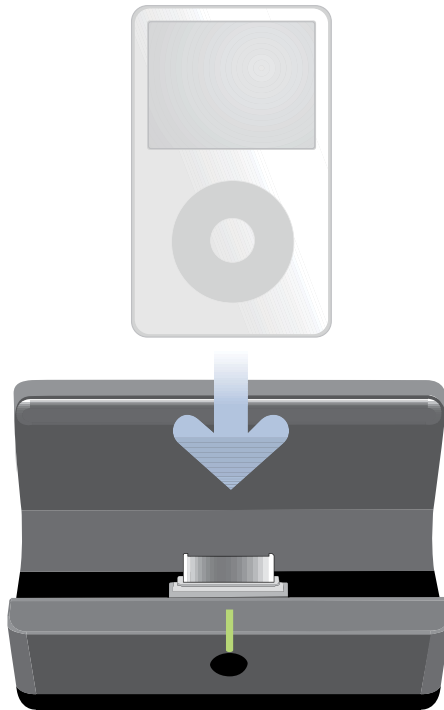
Contents

Power Adaptor Setup	4
Docking your iPod	5
Standalone operation	6
Connections for any amplifier	6
Remote control (CR1)	7
Arcam Solo Mini	8
Connections	8
Remote control	9
Arcam Solo Neo	10
Connections	10
Setup	11
Remote control	12
Arcam T32	14
Connections	14
Remote control	15
Arcam AVR360, AVR400, AVR600, AV888	16
AVR Connection Example	16
Setup — On Screen Display	17
Remote control	18
Navigation from the Front Panel	20
Song Selection	20
Changing Selection	21
Navigation from the On Screen Display	
(AVR360, AVR400, AVR600 & AV888 only)	22
Song Selection	22
Changing Selection	23

Power Adaptor Setup

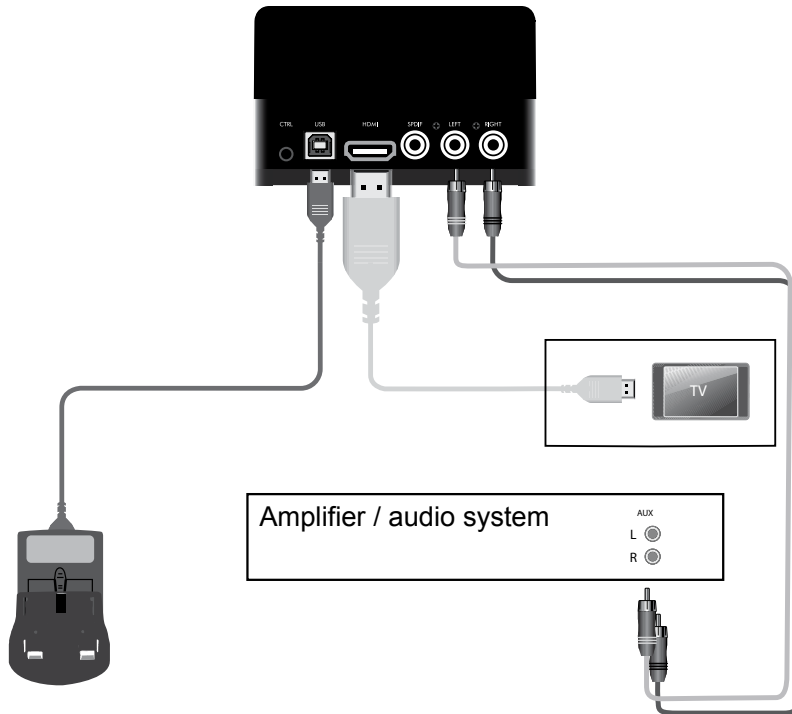


Docking your iPod



Standalone operation

Connections for any amplifier




Connect power adaptor, video cable (HDMI, optional) and audio interconnects.


Remote control (CR1)

The supplied remote control can be used to control your iPod when the drDock is not connected to a supported Arcam product. If you are using the drDock with a supported Arcam product, use the Arcam system remote instead.


Please remove the plastic tab to connect the supplied batteries before use.



 Turn the dock on/off, activate USB sync mode (iTunes connection).

 Go to previous menu (Albums, Artists, Playlists etc.).

 Mute.

 Increase volume.


 Decrease volume.





Select music by playlist, artist etc.


 Activate iPod repeat mode.

 Activate iPod shuffle mode.

 No function on drDock.

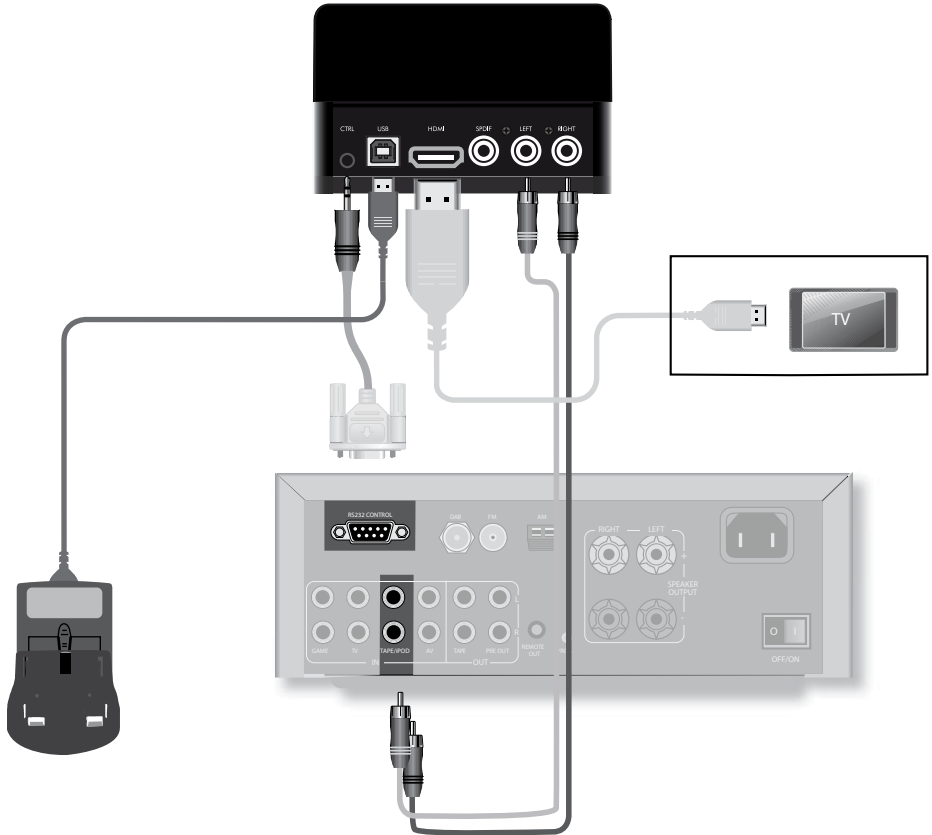
 Start or pause playback.

 Jump to the next track, track start or previous track in the current selection.

 Jump to the next track, track start or previous track in the current selection.

Arcam Solo Mini

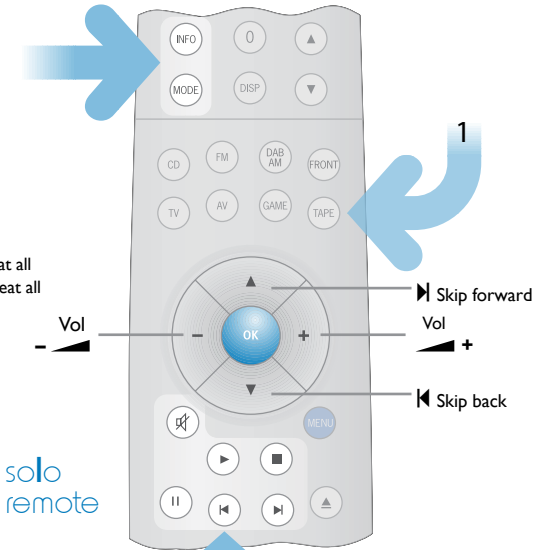
Connections



Remote control — Solo Mini

INFO Track name
Artist name
Album name
Track no.
Volume

MODE Repeat track
Repeat all
Shuffle songs
Shuffle albums
Shuffle songs repeat all
Shuffle albums repeat all
Play



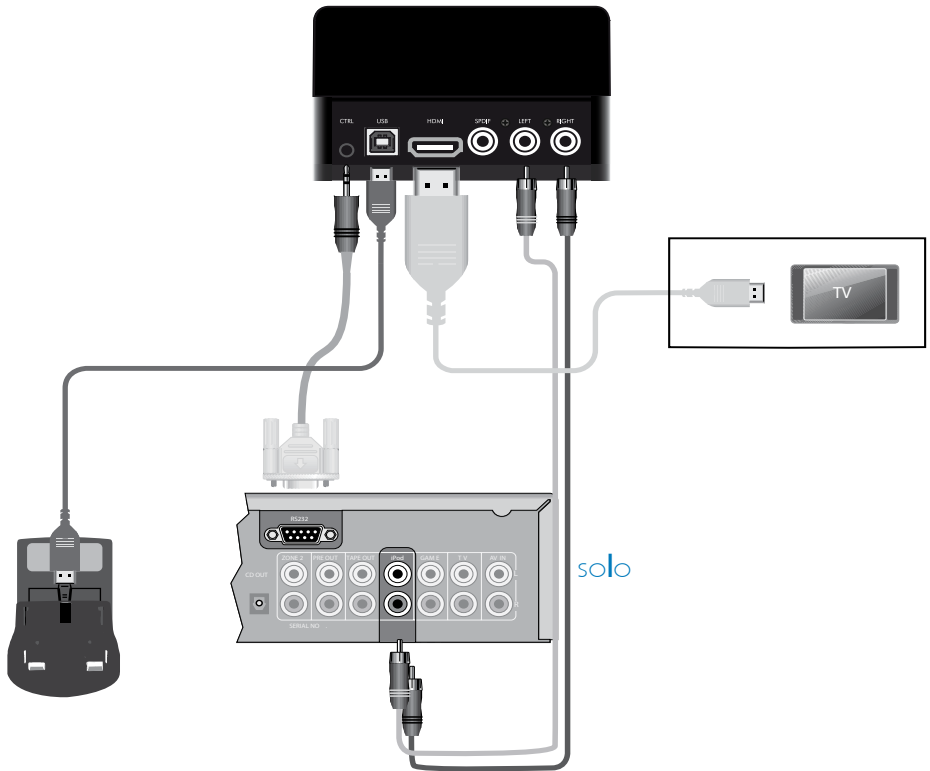
solo
remote

Playback control

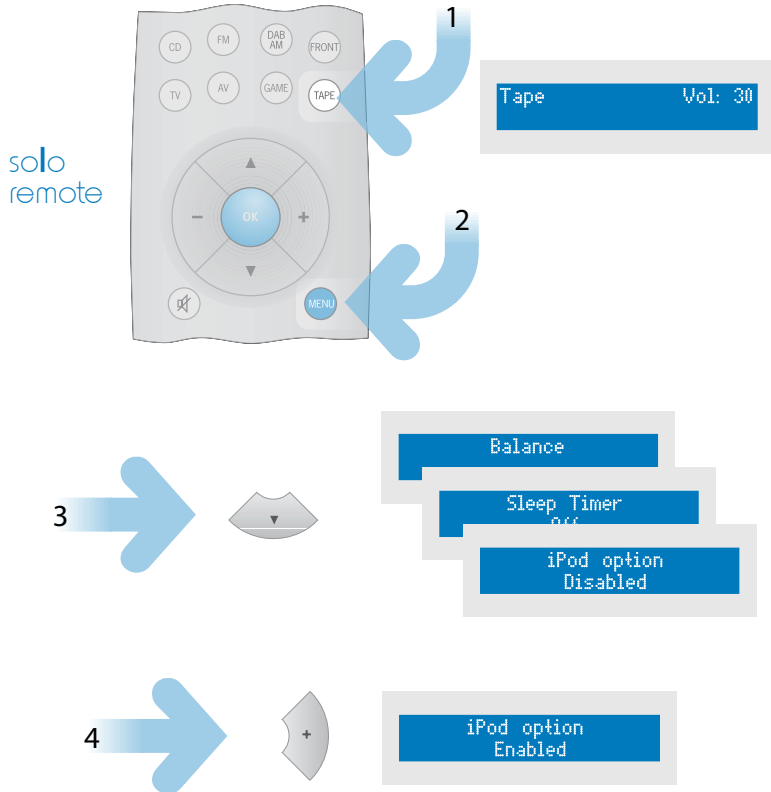
- ▶ Play
- Stop
- || Pause
- ◀ Skip back
- ▶ Skip forward
- 🔇 Mute

Arcam Solo Neo

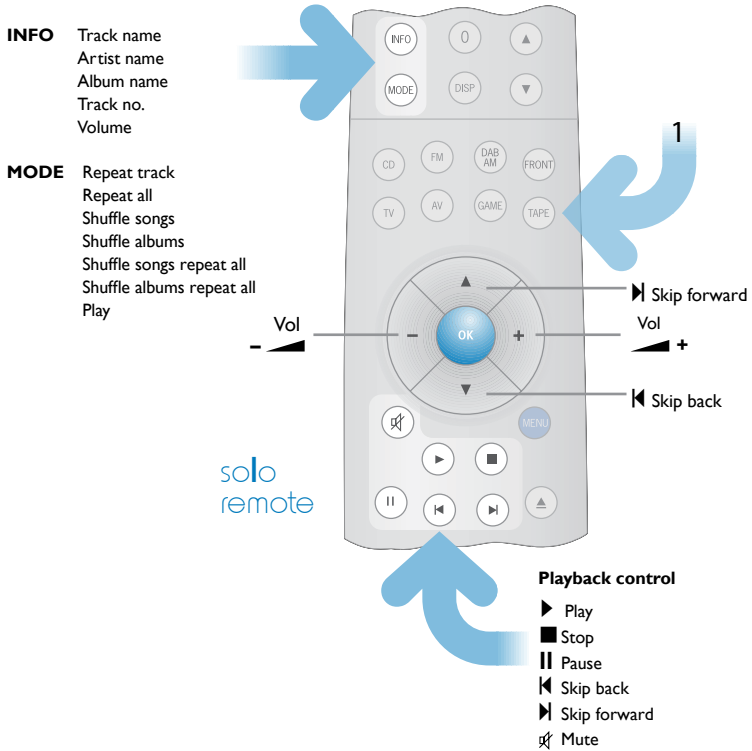
Connections



Setup — Solo Neo

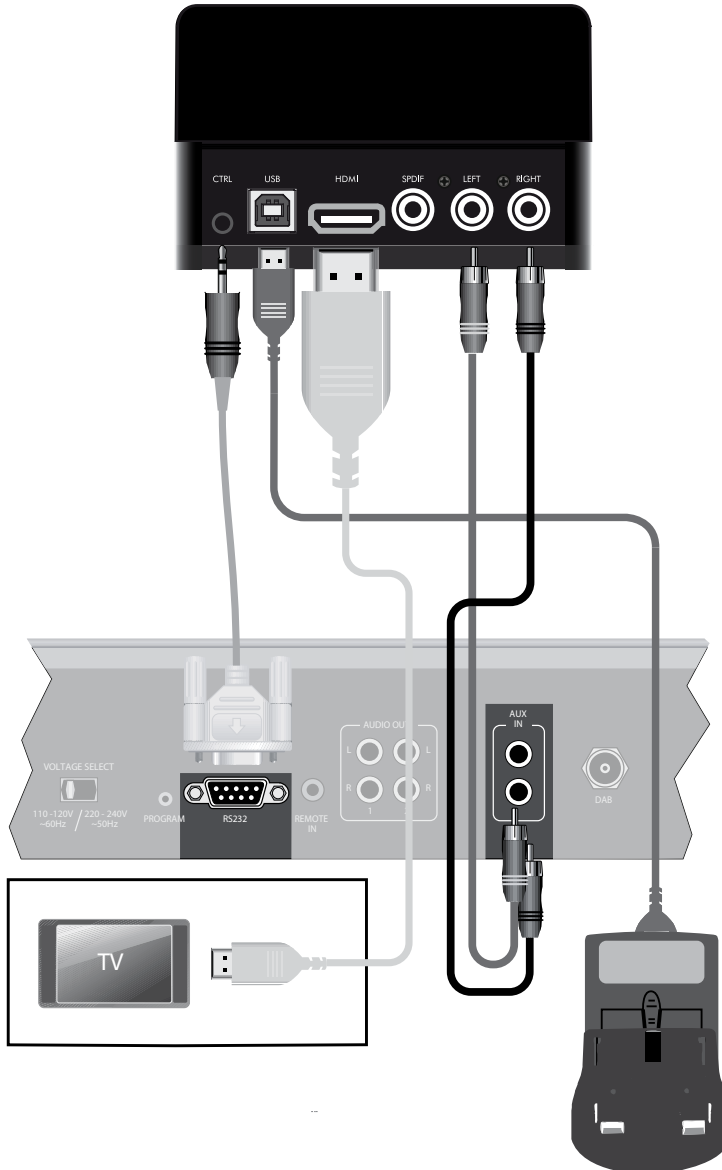


Remote control — Solo Neo

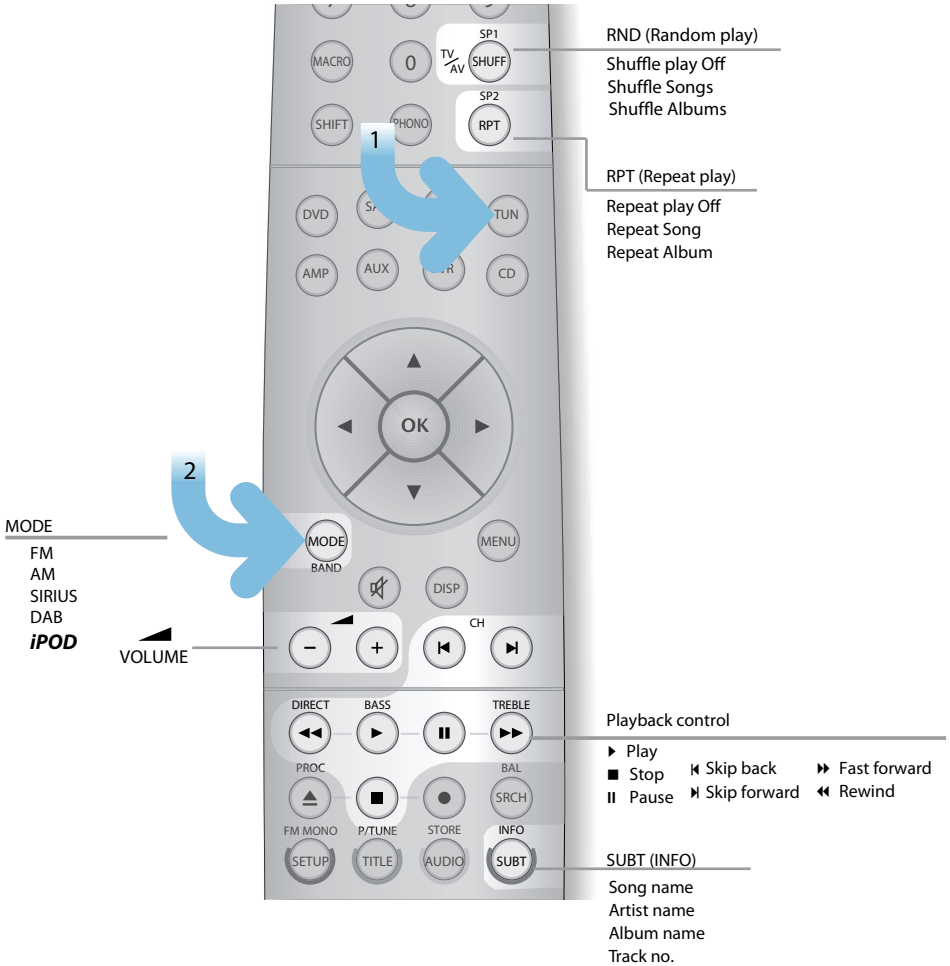


Arcam T32

Connections

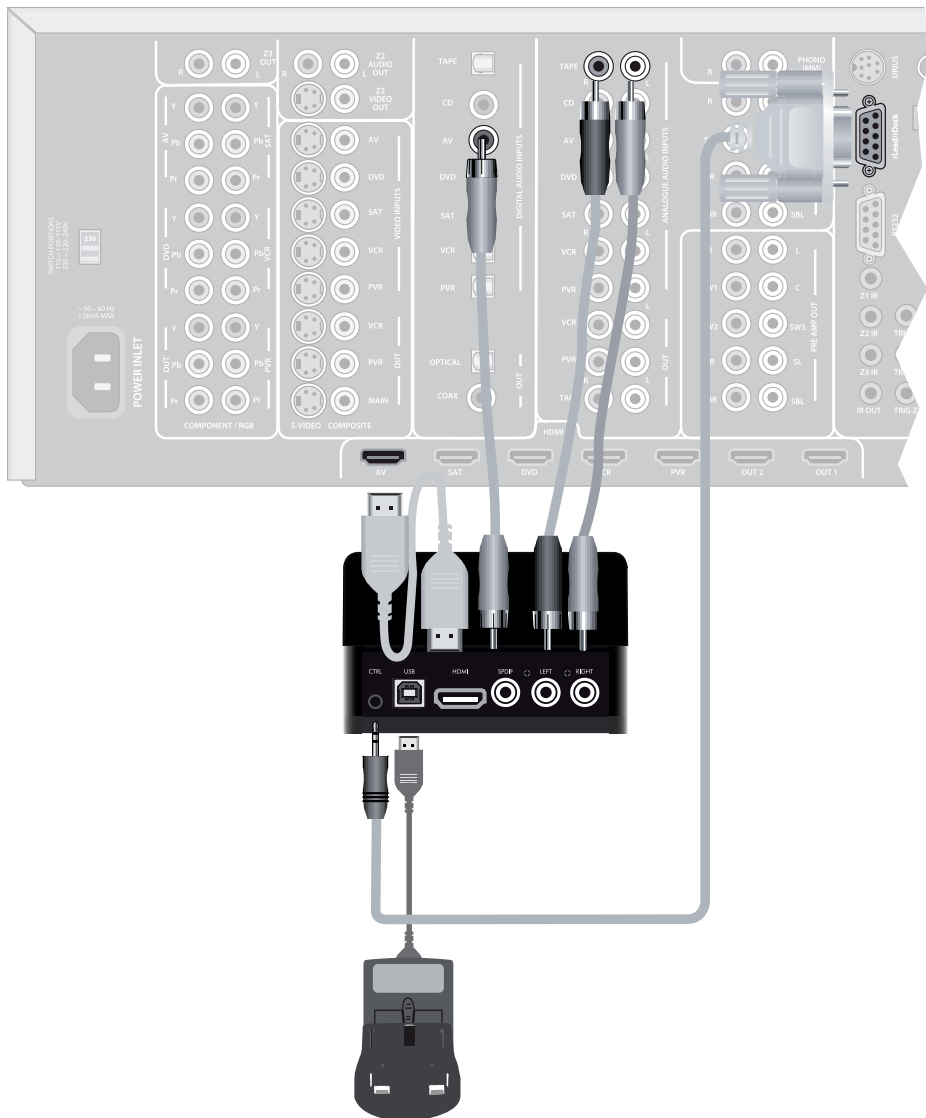


Remote control — T32 (CR90)



Arcam AVR360, AVR400, AVR600, AV888

AVR Connection Example

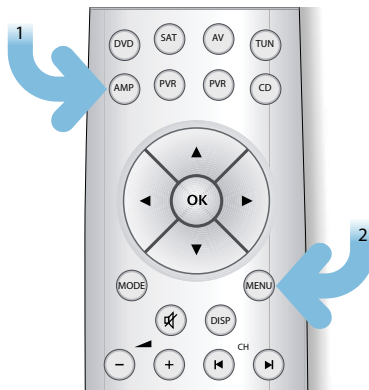


Setup — On Screen Display (not required for AVR360 & AVR400)

Input Config	
General Setup	
Auto Setup	
Spkr Types	
Spkr Distance	
Spkr Levels	
Video Inputs	
Video Outputs	
Mode	
Zone Settings	
Network	

Audio in iPod	: AV
iPod Accessory	
Select the Arcam iPod accessory	

rLead
rDock
> irDock/drDock



Remote control — AVR360, AVR400, AVR600, AV888 (CR102)

1 → AMP

2 → RND

RND (Random play)	SHIFT+RND = RPT (Repeat play)
Shuffle play Off	Repeat play Off
Shuffle Songs	Repeat Song
Shuffle Albums	Repeat Album

VOLUME

Playback control

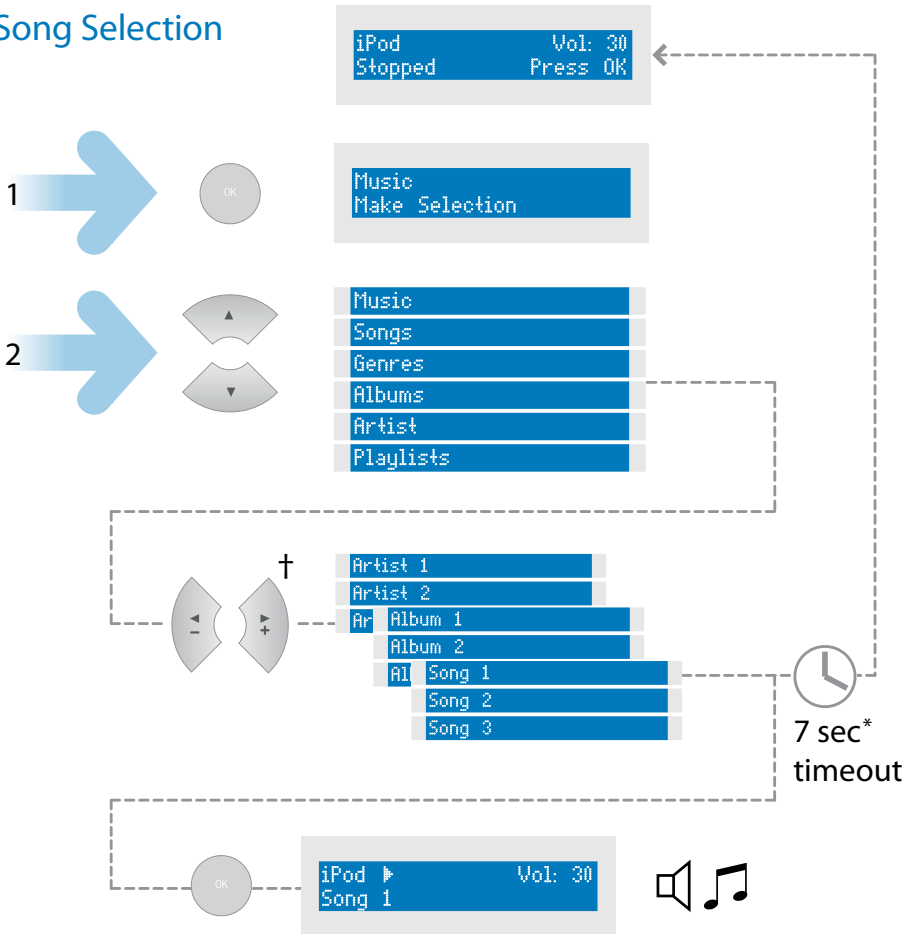
- ▶ Play
- Stop
- ⏸ Pause
- ⏮ Skip back
- ⏭ Skip forward

SUBT (INFO)

- Song name
- Artist name
- Album name
- Track no.

Navigation from the Front Panel

Song Selection

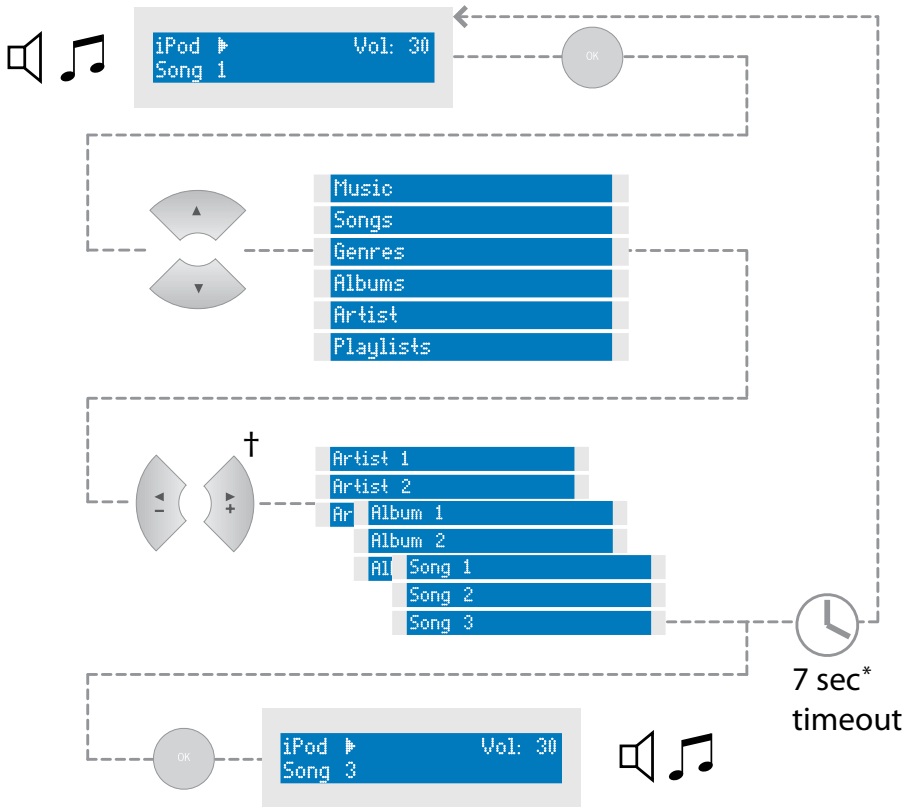


† -/+ = Solo mini remote

◀/▶ = CR50/CR90/CR100/CR102

* Solo Neo, Solo Mini & T32 only

Changing Selection



† -/+ = Solo mini remote

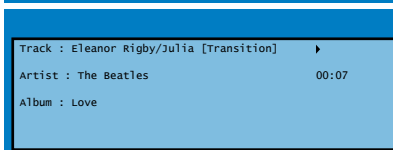
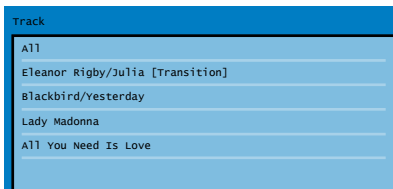
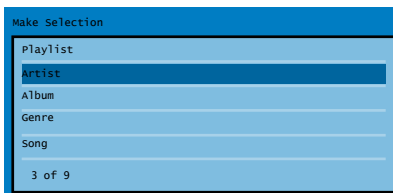
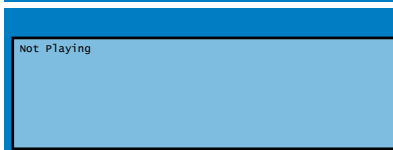
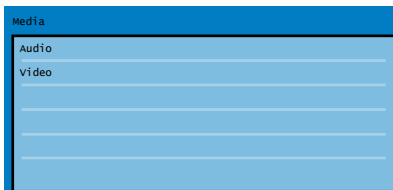
◀/▶ = CR50/CR90/CR100/CR102

* Solo Neo, Solo Mini & T32 only

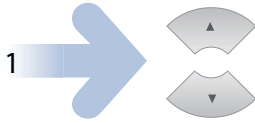
Navigation from the On Screen Display

(AVR360, AVR400, AVR600 & AV888 only)

Song Selection



Changing Selection



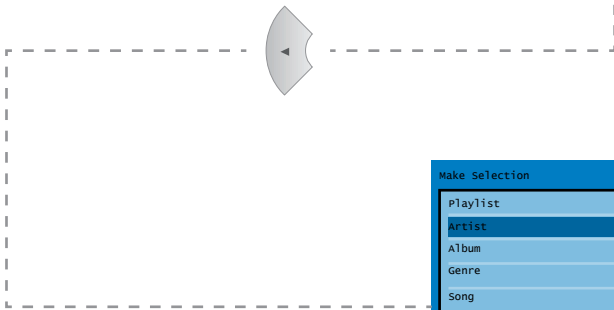
Track

- All
- Eleanor Rigby/Julia [Transition]
- Blackbird/Yesterday**
- Lady Madonna
- All You Need Is Love

Track : Eleanor Rigby/Julia [Transition] ▶

Artist : The Beatles 00:07

Album : Love



Make Selection

- Playlist
- Artist**
- Album
- Genre
- Song
- 3 of 9

Track : Eleanor Rigby/Julia [Transition] ▶

Artist : The Beatles 00:07

Album : Love

Legal Information

FCC INFORMATION (FOR US CUSTOMERS)

1. PRODUCT

This product complies with Part 15 of the FCC Rules. Operation is subject to the following two conditions: (1) This device may not cause harmful interference, and (2) this device must accept any interference received, including interference that may cause undesired operation.

2. IMPORTANT NOTICE:

DO NOT MODIFY THIS PRODUCT

This product, when installed as indicated in the instructions contained in this manual, meets FCC requirements. Modification not expressly approved by ARCAM may void your authority, granted by the FCC, to use the product.

3. NOTE

This product has been tested and found to comply with the limits for a Class B digital device, pursuant to Part 15 of the FCC Rules. These limits are designed to provide reasonable protection against harmful interference in a residential installation.

This product generates, uses and can radiate radio frequency energy and, if not installed and used in accordance with the instructions, may cause harmful interference to radio communications. However, there is no guarantee that interference will not occur in a particular installation. If this product does cause harmful interference to radio or television reception, which can be determined by turning the product OFF and ON, the user is encouraged to try to correct the interference by one or more of the following measures:

- Reorient or relocate the receiving antenna.
- Increase the separation between the equipment and receiver.
- Connect the product into an outlet on a circuit different from that to which the receiver is connected.
- Consult the local retailer authorized to distribute this type of product or an experienced radio/TV technician for help.

Apple, Mac, Mac OS, iTunes, iPhone, iPod, iPod classic, iPod nano, iPod shuffle, and iPod touch are trademarks of Apple Inc., registered in the U.S. and other countries. iPad is a trademark of Apple Inc.

"Made for iPod," "Made for iPhone," and "Made for iPad" mean that an electronic accessory has been designed to connect specifically to iPod, iPhone, or iPad, respectively, and has been certified by the developer to meet Apple performance standards. Apple is not responsible for the operation of this device or its compliance with safety and regulatory standards. Please note that the use of this accessory with iPod, iPhone, or iPad may affect wireless performance.

ARCAM

<http://www.arcam.co.uk>

Pembroke Avenue, Waterbeach, CAMBRIDGE, CB25 9QR, England