

X5 Complete User Manual

(applies to FW1.0 and later)



Foreword:

Thank you for purchasing FiiO' s X5, our 192 kHz/24 bit high resolution lossless music player. To let you better utilize the X5 to enjoy high-quality music, we have prepared this complete user manual and collected and answered some frequently asked questions by users. We hope this manual will help you get to know the X5 and unleash its full potential.

Contents

A. Introduction	3
B. Buttons and ports introduced	3-4
C. Firmware update	5
D. Pictorial guide to menu operation	6-7
E. Menu operation	8-12
F. Tips on usage	12-13
G. FAQ on the X5	13
1) About charging.....	13-14
2) Transferring songs.....	14-15
3) Firmware upgrades.....	15
4) Storage.....	15-17
5) Music playback.....	17-18
6) Other operations.....	18-19
7) Connection with other audio equipment.....	19

A. Introduction

The X5 is a high resolution digital audio player, supporting lossy and lossless music formats including DSD, WAV, FLAC, APE, WMA, ALAC, AAC, MP3, MP2 and Ogg Vorbis. A maximum sample rate of 192 kHz/64 bit or 5.6 MHz/1 bit (DSD128) is supported and other features include native DSD decoding, CUE sheets, gapless playback, playing automatically through folders, deep sleep / instant power-on and built-in coulomb meter (for accurate battery readouts). The X5 also includes a built-in headphone amplifier, DAC and independent analog volume control in the amplification section and may be used as a USB DAC as well. The following sections are an illustrated guide to using the X5.

B. Buttons and ports introduced



(1) Display (2.4" 400x360 IPS color display): Displays the user interface and other information; for operating the unit in conjunction with buttons on the unit.

(2) Shortcuts key: press briefly to show / hide shortcuts context menu, or go to the player settings from the main menu; when music is playing, holding down the Shortcuts key always takes you to the "Now Playing" screen.

(3) Back / main menu: Press briefly to go back up one menu level each time until you reach the main menu; pressing Back when you're in the main menu when music is playing takes you to the "Now Playing" screen. Hold this button to return directly to the main menu.

(4)Up / Previous track / Rewind: In “Now Playing” screen: press briefly to select the previous song for playback, hold down to rewind the current song;

In menus: press briefly to choose the previous item (up) in menus.

(5)Down / Next track / Fast forward: In “Now Playing” screen: press briefly to select the next song for playback, hold down to fast forward through the current song; In menus: press briefly to choose the next item (down) in menus.

(6)OK/Play/Pause/Volume adjustment:

In “Now Playing” screen: press briefly to play / pause;

In menus: press briefly to enter the submenu of the selected item, adjust the level / value / choice of the selected item (using the scroll wheel for items with numerical value or many choices, or alternating between choices using the OK button directly for other items);

In other dialogs: press briefly to confirm actions (press other buttons to cancel);

Volume control: Hold down this button at any time to pop up the volume control dialog and adjust the volume using the scroll wheel.

(7)Scroll wheel:

Freely rotatable (360° rotation), turn the wheel clockwise to scroll down / right, choose the next item on the menu or adjust the level / value / choice etc. for the selected menu item; turn the wheel counter-clockwise to scroll up / left, choose the previous item on the menu or adjust the level / value / choice etc. for the selected menu item in the other direction.

(8)Indicator light:

Blue while working, red while charging, green when fully charged.

(9)Volume “+” (10)Volume “-” :

Press briefly to change volume by one increment, hold down to change volume continuously until the maximum volume (“+” button) is reached or the player is muted (“-” button)

(11)Power/Lock button: When the unit is powered off, hold the button for two seconds and release it and the X5 will power on (after a brief pause); when the unit is on, press the button briefly to lock / unlock the player, or hold the button for three seconds to power off (hold for ten seconds for a forced shutdown).

(12)Headphone out: Headphone out supports CTIA standard (e.g. Apple, Samsung) in-line headphone control, with operation as follows:

Play/Pause: Single-click the middle button on the headphone controller to pause, single-click again to play.

Next song: Double-click the middle button quickly.

Previous song: Click the middle button for three times quickly.

Fast-forward: Double-click the middle button quickly and hold down the last click, release to continue playback.

Rewind: Click the middle button for three times quickly and hold down the last click, release to continue playback.

(13)Line / coax digital out:

Line out and coaxial digital output share the same output port—switch between the two using the “Multifunctional output” setting under the System settings menu.

(14)Micro USB port (11 pin):

For data exchanging, battery charging and connection to docking FiiO devices.

(15)Micro SD card slots:

Dual standard micro SD card slots, each supporting micro SD cards up to 128GB

C. Firmware update

Firmware updates may update the player with new features and optimize the playback experience; not upgrading to the latest firmware does not affect current operation of the unit. The unit supports firmware upgrades via update files loaded into micro SD cards. **Improper operation during firmware updates may cause the unit to malfunction! Please read the following instructions for firmware updates carefully before proceeding.**

To check the current firmware version:

From the main menu, navigate to System Settings->About X5 to see the current firmware version loaded on your X5.

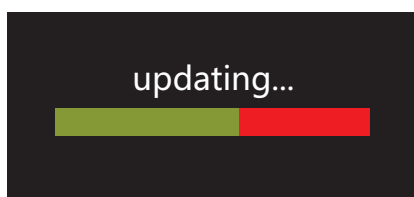
Preparations / Precautions before firmware update:

- A micro SD card formatted in FAT32 is required for firmware updates. This may be obtained by formatting a card using the X5' s built in formatting function (System settings ->format). CAUTION: all data and music on a card will be erased by formatting.
- A firmware update should not affect data on the micro SD card (other than any formatting required, see above). Nevertheless, please back up any important data on your card to protect against accidents.
- Make sure the X5 is adequately charged (preferably fully charged) for the update process to prevent power failure during the update;
- Do not operate other buttons and dials on the player during the update process.
- If the update process fails, hold the power button for 6 seconds for a forced shutdown and turn the player on in update mode again to resume the update.

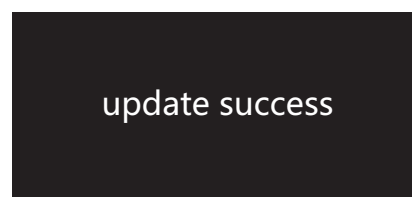
Summary of procedure for upgrading firmware using micro SD card:

- 1.Copy the X5II.fw file provided by FiiO into the root directory of a micro SD card in FAT32 format;
- 2.Turn off the X5 and insert the card into X5' s micro SD card slot 1 (left slot) (if not already inserted);
- 3.Hold the power button while holding the Shortcuts key (upper left key of the X keygroup) to turn on the X5 in firmware update mode. The following firmware update dialogs will appear and after the update is complete, the player will restart automatically.

Firmware update in progress



Update successful



After the update process is complete, please delete the X5II.fw file from the micro SD card and update the media library (System settings->Update Media Lib).

In case of firmware update failure:

- If "update file not found" is shown, please check to make sure that the micro SD card is formatted in FAT32 and that the X5II.fw file within the firmware update package was extracted and placed in the root directory of the card (e.g. by dragging the file directly onto the drive icon of the card on your computer).
- Otherwise, if the update process fails and error messages are shown, please hold the power button for 10 seconds for a forced shutdown and turn the player on in update mode again to resume the update.
- If the update process fails repeatedly, please try putting the X5II.fw file in a micro SD card of 32GB or under, formatted using the X5' s built in formatting function (System settings ->Format). CAUTION: all data and music on a card will be erased by formatting.

D.Pictorial guide to menu operation

1. Main menu

Buttons and dial explained:

Scroll wheel: scrolls through menu items, changes value of selected item

OK / Confirm / Play / Pause:

Enters next menu level, selects item for adjustment, stores changes

Shortcuts key:

Shows / hides shortcuts context menu

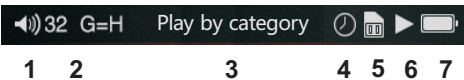
Back button: go back up one menu level

Up / Prev track | Down / Next track:

moves through menu items, changes value of selected item

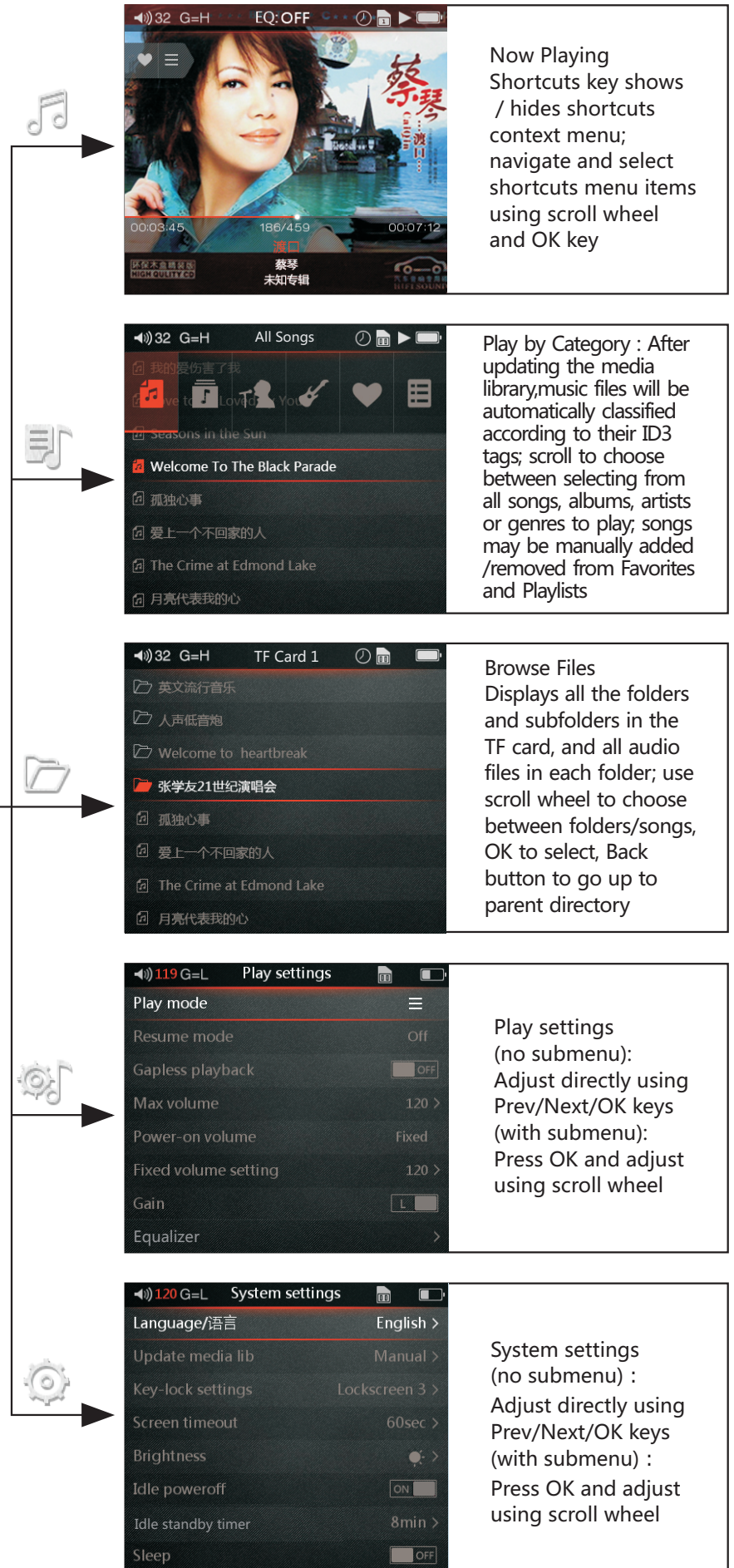


Play by category



Guide to status bar:

- 1.Current volume
- 2.Gain (Low / High)
- 3.Current UI page label
- 4.Sleep timer set
- 5.Micro SD card status
- 6.Now Playing sign
- 7.Battery indicator



2. Now playing

Cover



Lyrics



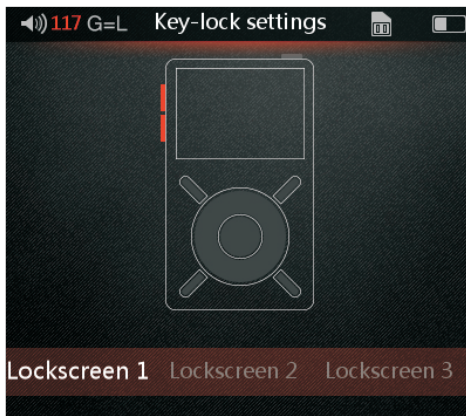
Press the shortcuts key briefly



Use the scroll wheel or the “Previous” “Next” buttons below the scroll wheel to choose between menu options

- ♥♡ Add or remove from favorites
- ⊕ Add to playlist
- 🔄🔄🔄 Select between loop all, loop single song, sequential and shuffle play modes respectively
- 🗑 Delete current song

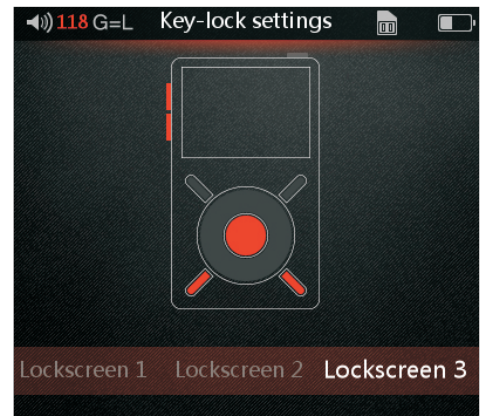
3. Key-lock settings



Lockscreen 1: Lockscreen mode 1 locks all keys except the power / lock button and volume buttons while the player is locked; at this time, press the volume button briefly to adjust volume, or hold to change tracks.



Lockscreen 2: In Lockscreen mode 2, the power / lock button, volume buttons and OK (Pause) button are usable while the player is locked; at this time, press the volume button briefly to adjust volume, or hold to change tracks.



Lockscreen 3: In lockscreen mode 3, the volume keys, OK (Pause), Previous and Next buttons as well as the power / lock button are usable while the player is locked; at this time, press the volume button briefly to adjust volume, or hold to change tracks.

E. Menu operation (detailed)

1. Powering on and off

Hold down the power button for two seconds and release it to turn on the X5 (language selection dialog would appear the first time the X5 is powered on); While the X5 is powered on, hold down the power button for 2 seconds to turn off the player.

The X5 enters the main menu after it is powered on; use the scroll wheel or the Previous and Next buttons to choose between Now Playing, Play by category, Browse files, Play settings and System settings; press the Shortcuts key to enter Play Settings directly.

2. Now Playing

While in the main menu, turn the scroll wheel to choose Now Playing and press OK. If no song is currently playing you will be shown a list of songs to choose from*. Use the scroll wheel and OK button to select a song and enter the Now Playing interface. *Note: songs list only appears after you have updated the media library.

Press the Shortcuts key briefly to pop up the shortcuts context menu; turn the scroll wheel or press the Previous or Next key to choose between shortcut menu items and press OK to apply the action, such as adding or removing the song from Favorites, changing play order or deleting the song.

Turn the scroll wheel in the Now Playing screen to pop up a list of songs before and after the current playing song. Turn the scroll wheel to choose between songs, press OK to select and start playing the new song.

3. Play by category

While in the main menu, turn the scroll wheel to choose Play by category and press OK. Use the scroll wheel or the Previous and Next buttons to choose between All songs, Album, Artist, Genre and Favorites. Turn the scroll wheel or press the Previous and Next buttons to choose between the above and press OK to enter the chosen categorized listing. When in one category directory, press the Shortcuts key to switch to other categories.

Add or remove favorites by

1) The Favorite button in the shortcuts context menu in the Now Playing screen (to add/remove the current song from the list);

2) Entering Favorites from the main menu. Press the Shortcuts key to batch add or remove songs (press OK to select and enter the songs list); use the scroll wheel to select a song, Previous or Next to add/remove a song from the list, and finally press OK to save changes. External M3U / M3U8 playlists and internal playlists are supported. The method of external playlist creation is detailed on <http://www.head-fi.org/t/761295/how-to-create-m3u-playlists-for-use-on-the-x1-x3-and-x5-from-your-computer>

To create internal playlists and add songs to internal playlists: while playing a song, go to the Now Playing screen and press the Shortcuts key and choose the [+] icon and press OK. Follow the onscreen prompts to create a new playlist or add the current song to an existing playlist.

To delete internal playlists: press the Shortcuts key when the list of playlists is shown (Play by category->Playlists).

To delete a song from an internal playlist: press the Shortcuts key when the contents of a playlist is shown (Play by category->Playlists->(select a playlist))

4. Browse files

Turn the scroll wheel to select "Browse files" and press OK to browse the music files contained in the micro SD card. ("TF card not found" would pop up if there is no micro SD card inserted in the slot selected) or any external storage connected to the X5 via USB OTG connection ("OTG"). Turn the scroll wheel to select between items, press OK on a song to play it or press OK on a folder to enter the folder.

5. Play settings

Turn the scroll wheel to choose between menu items and use the Previous, Next or OK key to choose between options on the chosen menu item. On items with a submenu (indicated by ">"), press OK to enter the submenu.

1) Play mode

Four play modes are available: sequential (plays to the end of the list and stops), loop all, loop single song and shuffle.

2) Resume mode

Controls where the X5 starts playing from when it is switched off and switched back on.

Off: no memory of the last song played when X5 is switched off.

Song: resumes playback from the start of the last song played when the X5 was switched off.

Position: resumes playback from the last position on the timeline of the last song played when the X5 was switched off.

3) Gapless playback

Turn this on to play e.g. a live performance divided into several tracks without breaks in between tracks.

4) Max volume

To protect your headphones and your hearing, the max volume can be limited to a value between 30 and 120 (unlimited maximum is 120). Press OK to show the adjustment submenu, turn the scroll wheel to adjust the limit value and press OK to store the change.

5) Fixed volume setting

Memory: recalls the volume set when the player was powered off.

Custom: always powers on the player at the volume defined in "Fixed volume setting" .

Fixed volume setting: adjustable only when "Power on volume" is set to "Custom" . Press OK to show the adjustment submenu, turn the scroll wheel to change the power-on volume setting and press OK again to store the change.

6) Gain

There are Low and High gain settings available. Low gain may be selected to extend battery life under usual operating conditions; High gain may be selected to drive low-efficiency / high-impedance headphones more fully to obtain further musical enjoyment.

7) Equalizer

There are several preset equalizer settings as well as a custom setting available. All presets as well as the custom setting are editable. Press the previous and next keys to switch between presets (Off, Rock, Classical, Jazz, Pop, Dance, Vocal, Blues, Metal and Custom). Press OK to enter editing mode (arrow will appear above one of the EQ bands), turn the scroll wheel to choose between different frequency bands, press OK to select a frequency band for editing and turn the scroll wheel to adjust the frequency band up or down, and then press OK to store the change and use the scroll wheel to choose another frequency band for editing. Press the back button to store changes / exit to EQ band selection / preset selection.

8) Balance

Press OK to adjust balance with scroll wheel (press OK to store change). The adjustment range is between +5dB to left channel and +5dB to right channel.

9) Play through folders

While playing songs selected via Browse Files, if "Play through folders" is turned on and the last song in a folder is reached, the first song in the next folder (as shown in Browse Files) will be played next; if said folder contains subfolders, songs in those subfolders would also be played.

6. System settings

While in the main menu, turn the scroll wheel to choose System settings and press OK. Turn the scroll wheel to choose between menu items and use the Previous, Next or OK key to choose between options on the chosen menu item. On items with a submenu (indicated by ">"), press OK to enter the submenu.

1) Language

Press OK and use the scroll wheel or Previous / Next buttons to choose between English, Japanese, Korean, French, German, Spanish, traditional Chinese and Simplified Chinese. Press OK to store change or Back to cancel. The language setting is memorized even when the device is powered off or reset.

2) Update media lib

The Media Library needs to be updated for songs to be shown in "Play by category" . Press the Previous and Next keys to choose between:

Manual: updates the media library only when you press OK on "Update media lib" ;

Auto: updates the media library automatically each time after the X5 was connected to a computer or mass storage or micro SD card was inserted /removed.

Updating the media library takes a considerable amount of time for a large library of songs; the screen will show the progress in terms of number of songs scanned and finally report on the total number of songs scanned. Please do not press any buttons during the update process.

3) Key-lock settings

The keys may be locked (and the screen turned off) via a brief press of the power button (or programmable automatic screen timeout) to prevent accidental operation when e.g. the player is not held in your hand.

Press OK to enter the key-lock setting submenu and choose between lockscreen modes 1, mode 2 and mode 3. As shown by the corresponding illustration onscreen: Lockscreen mode 1 locks all keys except the power / lock button and volume buttons while the player is locked; in Lockscreen mode 2, the power / lock button, volume buttons and OK (Pause) button are usable; while in lockscreen mode 3, the volume keys, OK (Pause), Previous and Next buttons as well as the power / lock button are usable.

Note: while screen is locked, press the volume button briefly to adjust volume, and hold volume button to change tracks.

4) Screen timeout

The player turns off the screen and locks the keys automatically after the set delay when no buttons have been pressed and the scroll wheel hasn't been turned, whether or not songs are playing. The set delay can be set between 30s, 40s, 50, 60s, 90s, 120 and never (always on). Press OK on this menu item to pop out the setting dial and turn the scroll wheel to change the setting.

5) Brightness

Press OK to adjust the brightness (adjustable in 10 steps) using the scroll wheel and press OK again to store the change.

6) Idle standby

When this is set to on, the player will go into deep sleep if the user does not operate the player for the set amount of time and no music is playing.

Idle standby timer: When "Idle standby" is set to on, you may press OK on this item to adjust the amount of idle time detected before the player enters deep sleep. The set time is adjustable from 1 to 8 minutes. Turn the scroll wheel to adjust the set time and press OK to store the change.

7) Sleep

When this is set to on, the player will go into deep sleep after the set time with no user operation even while music is playing. This is useful as a timer for turning the music off, e.g. when you're listening to music in bed.

Sleep timer: When "Sleep" is set to on, you may press OK to adjust the amount of play time before the player enters deep sleep. The set time is adjustable from 10 to 120 minutes. Turn the scroll wheel to adjust the set time and press OK to store the change.

Note: the sleeper timer will take effect for once only; the sleep switch will default back to "off" after the device goes to sleep.

8) Multifunctional outputs

One port on the X5 serves as both the line out and coaxial digital output; select between the two using this menu item. Playback needs to be paused to switch between the two outputs. Line out is to be used to connect to analog line input on e.g. headphone amplifiers while coaxial digital output may be used to connect to DACs, receivers, amplifiers etc. having coaxial digital input.

9) File name display

Using this menu item, the Now Playing screen may be set to display the now playing song's filename or its title according to its ID3 tag.

10) USB mode

The X5 may be set to Storage or DAC mode when connected to the computer via USB. In Storage mode, the X5 acts as a standard USB storage device; any micro SD card inserted in the X5 will appear on the computer as a removable drive and you can then drag and drop e.g. music files into it to add music and otherwise manage your music library on the X5. In DAC mode, the X5 will act as an external USB sound card and you may play music directly from your computer through the X5 and enjoy the X5's superior sound quality on your computer. Note: driver installation required for DAC mode on windows computers. Storage / DAC mode switch needs to be performed while the X5 is not connected to the computer.

11) Supports in-line headphone control

The X5 supports headphones with CTIA standard (e.g. Apple, Samsung) in-line remotes. If you do not want to use the remote function, or an incompatible pair of headphones is operating the X5 irregularly, you may set this menu setting to "off" and the X5 will ignore any remote input from the connected headphones.

12) Theme

Press the Prev / Next keys or OK key on this to switch between the five available theme settings.

13) About X5

Displays the name and model of the player, total and available capacity of the inserted micro SD card, total number of songs loaded, firmware version and the serial number / batch number of your X5. Turn the scroll wheel clockwise to read our copyright declaration and then the quick start guide to the X5.

14) Format

Press OK to format the inserted micro SD card into FAT32 format; all data in the card will be erased after formatting. Please backup all files on your micro SD card to another location before formatting!

15) Reset factory defaults

Resets all settings to factory defaults. Also useful for recovering from any system malfunctions.

F. Tips on usage

This section contains some useful tips for you to get the most out of your X5.

1) How to update the media library quickly

It is recommended to set System Settings->Update Media Lib to Auto, so that the X5 will update the media library automatically each time after you connect it to the PC or insert/remove a micro SD card.

2) How to play your favorite songs quickly

Go to the Favorites menu to add a batch of your favorite songs (or favorite individual songs as they are played in the Now Playing screen) and then enter the favorites menu to enjoy all your favorite songs. The X5 supports addition and removal of songs defined in .cue files to favorites as well for your enjoyment of lossless rips of CDs/DVDs/etc.

3) How to cut over to the song you want to listen to quickly

Turn the scroll wheel in the Now Playing screen to pop up a list of songs before and after the current playing song. Turn the scroll wheel to choose between songs, press OK to select and start playing the new song.

4) How to adjust the volume easily

While the screen is on, the volume control dialog will appear anytime the volume up/down buttons are pressed or the OK buttons is held for one second. When the volume control dialog appears you may adjust the volume stepwise using the volume buttons or use the scroll wheel to change volume quickly.

Note: In the three lockscreen modes, the volume buttons are always usable when the player is locked.

5) How to turn on Resume mode to get back on the groove quickly

Under Play Settings, Resume mode controls the playback behavior of the X5 when you turn it back on. Setting this to Last Song allows the player to start playing again from the last song before the X5 was powered off while Last Position even remembers where you were up to in the track you were playing.

6) How to realize gapless playback function

Gapless playback means going from one music file to the next without a pause in between. Enable gapless playback on the X5 by entering Play settings from the main menu and setting the Gapless playback option to On. (Note: gapless playback is not supported in shuffle and loop-single-song modes.)

7) How to save power in case of temporary non-use to get longer battery life

Battery life is a matter that concerns users always. There are several functions on the X5 to save power.

- a. Sleep Mode: set sleep mode to on when you enjoy the music at night for fear of forgetting to turn it off. Then it will go to deep sleep automatically after reaching the set duration. Note that the sleep timer will reset to off after it is triggered once.
- b. Idle Standby: set the "Idle Standby" to on so that if you pause the music and leave the player idle (not pressing any of its buttons), it will go to deep sleep by itself after the set time.
- c. Power off: the X5 goes into deep sleep from the sleep timer or idle standby, ready to be turned back on and start playing music again in a split second. If you want to turn off the X5 completely to further save power, hold the power button for 3 seconds while the screen is on. The power-off animation will play to confirm that you're powering off the X5.

G. FAQ on the X5--About charging

Q: How to extend the lifetime of battery in the X5?

A: The lifetime of a battery is expressed in terms of number of full charge-discharge cycles: lithium batteries can sustain about 300 such cycles before showing decrease in capacity in line with end-of-life symptoms. To extend the lifetime of the battery in the X5, avoid fully discharging the battery where possible and recharge it fully whenever a power source is conveniently available.

Q:What power sources may be used to charge the X5?

A:The X5 may be charged by any USB charger with 5V output voltage and 450mA or greater output current; in a pinch you can also charge it using a computer USB port, albeit slowly.

Q:What is the charging current of the X5 while charging?

A:Less than or equal to 500mA through a computer USB port or less than or equal to 1300mA through a dedicated USB charger as recommended (DC 5V 2A).

Q:How long does it take to charge up the X5?

A:A full charge through a dedicated USB charger as recommended (DC 5V, 2A) takes about 4 hours.

Q:Can the X5 be charged by a portable USB charger?

A:Yes, as long as the charger is capable of 450mA or greater current.

Q: Can the X5 play songs while charging?

A:Yes; no harm will come to the X5 if you use it while charging, in which case it is normal for the X5 to get warm. The reason we recommend turning the X5 off for charging is so that charging completes more quickly.

Q: What to do if the X5 gets a little hot when playing songs while charging?

A: It is normal for the X5 to get a bit hot in these conditions and this does not endanger the X5 or the listener in any way. If you are worried about this, it is better to take off any casing to expose the X5 to air for cooling down. If you're still worried, turn down the volume on the X5 or turn off the player for charging.

Q: Can the X5 be connected to chargers via other micro USB cables?

A: Yes, but the micro USB cable that comes with the X5 is specially constructed with thick power line conductors to minimize power loss while charging. Using other micro USB cables may lead to slower charging; very poor quality USB cables may cause so much power loss through the cable as to fail to charge the X5 altogether.

Q: Why does the X5 charge so slowly or not at all through a front USB port on a desktop computer?

A: The front USB ports on a desktop computer are connected to the motherboard through long thin cables, which cause too much voltage drop when connected to high current draw equipment like the X5.

Q: How to judge the X5's charging status?

A: On the power button, there is a charging indicator LED, which lights up red while charging and green when fully charged. The battery level of the onscreen battery gauge (on the upper right corner while the player is on, or taking up the whole screen if the player is off) moves to indicate battery charging.

Q: How to tell whether the X5 is fully charged or not?

A: When X5 gets fully charged, the status indicator LED on the power button lights up green and the onscreen battery gauge (on the upper right corner while the player is on, or taking up the whole screen if the player is off) stops moving and holds steady at full.

G. FAQ on the X5 -- Transferring songs

Q: What operating systems does the X5 support (for transferring songs)?

A: It supports 32bit and 64bit Windows XP, Windows 7 and above, as well as Mac OS 9, X, and most versions of Linux and Unix.

Q: What USB ports are the X5 compatible with?

A: The X5 is compatible with USB 2.0 (and all later standards that are backwards compatible with 2.0, including 3.0 and 3.1).

Q: How quickly does the X5 transfer songs?

A: This is dependent on the size of files / songs transferred and the Class of the micro SD card; average read / write speeds are about 5MB/s.

Q: Why does it transfer so slowly through a front USB port on a desktop computer?

A: The front USB ports on a desktop computer are connected to the motherboard through long thin cables, which may degrade the signal quality and hence reduce the speed of transfers; It is recommended to connect to a rear USB port on a desktop computer to transfer data.

Q: Does the X5 support deleting or copying files by dragging through the computer's File Manager?

A: Yes.

Q: Is a driver required for connecting the X5 to computer?

A: No driver is required for connecting the X5 to a computer for file transfers.

Q: Does the X5 support Linux or (insert OS name here)?

A: Theoretically it is supported (as a generic mass storage device), but we cannot guarantee support through actual testing of all the various OSes out there.

Q: Why is my X5 not recognized through a USB3 port or on Windows 8/10?

A: USB3 ports and Windows 8/10 are new standards; although they are theoretically backwards compatible with previous standards, in practice devices may need to be optimized for forward compatibility with these new standards and as such the X5 may not be recognized through some USB3 ports or on some Windows 8/10 computers. We will remedy the situation as soon as possible through firmware upgrades. If you run into such problems in the meantime, the temporary solution in the meantime is to transfer through USB2.0 ports and Windows 7 / Windows XP. If these options are not available you may transfer through a supported card reader before transferring the card to the X5.

G. FAQ on the X5--Firmware upgrades

Q: How to know what firmware version is on my X5 and what is the newest version?

A: The current firmware version can be viewed via System Settings->About X5. All firmware versions for the X5 may be downloaded via <http://www.fiiio.net/en/supports/34>.

More ways to keep updated with the latest firmware versions of X5:

1. Facebook: www.facebook.com/FiiOAUDIO
2. Official website: www.fiiio.net
3. Forum: <http://www.head-fi.org/forum/list/180> / <http://fiiio.me/forum.php?mod=viewthread&tid=39932&extra=page%3D1>
4. Email us at support@fiiio.net

Q: How to update the X5 firmware?

A: Please refer to Section C. Firmware Update in this user manual.

Q: Is it possible to brick the X5 while upgrading the firmware? What to do if my X5 is bricked?

A: It should not be possible to brick the X5 in the normal course of upgrading its firmware. If you somehow manage to brick it, please contact us via support@fiiio.net and we can instruct you on how to unbrick it.

G. FAQ on the X5 -- Storage

Q: What cards does the X5 support?

A: The X5 supports TF cards (also known as micro SD cards), including SDHC and SDXC.

Q:Is the X5 picky about cards?

A:The X5 has been tested to support major brands such as Sandisk and Kingston very well. It is beyond our ability to test every other brand out there, but any genuine card from a reputable brand should work with the X5. To prevent slow card speeds causing the X5 to stall while playing or be unable to play high bitrate lossless tracks (such as 192k/24bit APE files or DSD files), please use micro SD cards of Class 6 or above.

Q:What size of cards does the X5 support?

A:The X5 is currently tested to support micro SD cards up to 128GB. It is recommended to format the card in FAT32 format.

Q:How to format the micro SD card into FAT32 format?

A:

1. Simply insert the card into the micro SD card slot in the X5, go to System Settings->Format, press OK to select and OK again to confirm formatting the card to FAT32 format. or
2. Insert the micro SD card to a card reader to connect to your computer, right-click on the micro SD card shown and choose "Format..." and follow the prompts to format the card to FAT32 format. But please do not choose 64K under the Allocation unit size when formatting the micro SD card. Also, Micro SD cards in 64G or 128G sizes cannot be formatted into FAT32 by the windows system, please try to use third party tool to format. You can download the specialized format tool (Guiformat/smdk_fat32) via <http://www.fiiO.net/support/download.aspx>. Warning: all data and existing songs on the card will be deleted, please make backups on your computer first as necessary.

Q:Nothing from the micro SD card shows on the X5?

A:

1. Play by Category will not show any songs from a card unless and until a media library update has been performed. Go to System Settings->Update Media Lib, press OK to perform a manual media library update.

Or use Browse Files to confirm that the files on your card are recognized by the X5.

2. If neither of the above works to show you the songs on your card:

i. Go to System Settings->About X5 and check that the Available Capacity of the micro SD card you inserted is shown correctly (comparing it to the info shown on your computer); if not, try formatting the card using the X5 (this deletes all files on the card; please back up your data and music first) and putting your files back on the card;

ii. If this does not help, you may try formatting the card into NTFS format using Windows;

iii. If none of the above helps, it is recommended that you try another card with the X5.

Q:Some songs on the micro SD card don't show on the X5?

A:

1. Have you performed a media library update after you last loaded songs onto the card? Go to System Settings->Update Media Lib, press OK to perform a manual media library update.

2. If songs are still missing in "Play by category" (while they all appear in Browse files), try updating the X5 to the latest firmware.

3. After updating to the latest firmware, try updating the media library again.

Q:Does the X5 support NTFS/exFAT format?

A:Yes, but only FAT32 format cards can be used for firmware upgrades.

Q:How to delete X5' s media library database file?

A:Eject micro SD card from the both card slots on the X5 before updating the media library. The X5 will delete the media library database file automatically.

G. FAQ on the X5 -- Music playback

Q:Why would some mp3s not play?

A:The X5 does not play some low bitrate or sample rate mp3s, specifically sample rates under 32kHz and bit depths under 16bit are not supported.

Q:Why does my .wav files not play?

A:Please check using Foobar2000 or other capable software on the computer to see whether the wave file is actually DTS or Dolby encoded multichannel audio, or perhaps a wave file of bit depth over 24 bits (32bit and 64bit files are not always supported).

Q:Why does my .ape files not play?

A:APE comes in 5 levels of compression, including Fast, Normal, High, Extra High and Insane. Extra High and Insane encoded APEs are not supported while Normal and High encoded APEs are only supported at 94k/24bit or below.

Q:Does the X5 support cue sheets?

A:The X5 supports external cue sheets for identifying and playing a cue' d music file as separate tracks.

Q:Why is my cue sheet not supported?

A:Embedded cue sheets are not supported. Also please make sure that the .cue file is named the same as the music file that it cues.

Q:Why does X5 not show the cue file in the micro SD card when browsing files?

A:Since it has been already been used by the X5 to split the cue' d file into multiple tracks (which are shown).

Q: How to listen to all the music folders on the X5 one by one without switching folders manually?

A: Play settings->Play through folders may be set to On to set the X5 to skip automatically from the last song in one folder to the first song in the next folder.

Q:Why do my lyrics not show?

A:The X5 only supports external .lrc files, named after the music file it lyricizes.

Q:Why am I seeing rubbish characters?

A:Only ANSI, Unicode and UTF-8 (with and without BOM) encodings are supported for ID3 tags and .lrc files to be read by the X5. If the ID3 tags and / or lyrics files are encoded in an unsupported format, rubbish characters will be shown.

Q:Why do my new songs not appear under any Category?

A:Please go to System Settings->Update Media Lib and press OK to update the media library for new songs to be indexed under Play by Category. You may also press Previous or Next to set Update Media Lib to Auto. Also, your songs must have ID3 tag info for it to be identified in the Media Library.

Q:Why does the total number of files displayed by X5 differ from the actual number of files that I copied into the micro SD card?

A:The total number displayed by the X5 indicates the total number of files playable by the X5.

G. FAQ on the X5—other operations**Q: How to get longer battery life for the X5?**

A:

1. Turn on "Idle standby" . When this is set to on, the player will enter standby after the set time when no music is playing and the user does not press any buttons on the player.
2. Lower the backlight brightness to reduce power consumption.
3. Set the "Screen timeout" timer, so that the player turns off the screen and locks the keys automatically after the set delay when no buttons have been pressed and the scroll wheel hasn' t been turned.

Q:Why is the X5 sometimes sluggish in responding?

A:

- 1.High bitrate lossless tracks, particularly 192k/24bit APEs or DSD files, take more hardware resources to decode, possibly causing slowdowns in the player UI. You may convert such APEs to FLACs or uncompressed WAVs using programs such as foobar2000 on the computer first to make it easier on the player. The sound quality will be the same.
2. Placing too many songs on the X5' s micro SD card where possible.
- 3.Placing non-music related files on X5' s micro SD cards, such as videos and pictures, may cause the X5 to slow down while sifting through them looking for music files. It is recommended to dedicate the micro SD card on the X5 to music.
- 4.Playing high bitrate files or DSD files from slow micro SD card may cause stuttering. Class 6 or above genuine micro SD cards are recommended.
- 5.Unpredictable ordering of files, such as placing several .ape and .cue files in the same directory. The following directory structure is recommended: create separate folders for albums by the same artist, and open subfolders within each artist folder to hold single albums in separate subfolders.
- 6.A mixture of music files of several different codecs and sample rates may also slow down the player. It is recommended to place files of different codecs and sample rates into separate folders and to play files of the same type in sequence from these folders, to prevent the X5 from having to switch between different decoders frequently.

Q: Why does the X5 get a bit hot in operation?

A: The X5 utilizes an SoC with high clock speed, a separate DAC, and (also separately) a high power headphone amplifier and independent analog volume control in the amplification stage, thus dissipating way more power than consumer DAPs typically performing computation, DAC and amplification all on the SoC. Apart from outputting more power to your headphones, a lot of this power is also dissipated as heat, thus causing the X5 to heat up slightly in operation; but this does not endanger the X5 or the listener in any way.

G. FAQ on the X5—connection with other audio equipment**Q: How to connect the X5' s line out to other audio equipment?**

A: The X5' s line out outputs an unamplified signal to e.g. amplifiers, receivers, headphone amplifiers, car audio inputs, etc. The fact that it' s an "unamplified signal" can be misleading however. The line level signal of the X5 is of a higher voltage than the headphone out at all but the highest volumes and can damage headphones if you connect them directly to the line out. Please remember to set the output mode (System Settings->Multifunctional outputs) to line out as otherwise coaxial digital output would be amplified as noise by equipment expecting line input.

Q: Why does the X5 not show up as a storage device when I connect it to my computer?

A: Please check that the X5 is set to "Storage" USB mode (System Settings->USB mode) rather than DAC mode.

Q: How to utilize the X5' s coaxial digital output?

A:

1. Set the X5' s multifunctional output to "Coax out" mode.
2. Use the provided 3.5mm coaxial adapter cable to obtain a standard RCA coaxial output port and connect to the coaxial input of your S/PDIF coaxial digital-compatible receiving device using a standard coaxial RCA cable.

Q: Why does my HT receiver never play the first ten seconds of music from my X5?

A: If the HT receiver is not explicitly set to receive audio from the coaxial port, it takes approximately ten seconds to detect that audio is not coming in through the HDMI port and switch to the coaxial port. In this case, please set the HT receiver' s audio input to Coaxial.

Q: Why doesn' t the computer recognize the X5 as a DAC or storage device when I switch from Storage to DAC mode or vice versa?

A: Please disconnect the X5 from the computer, switch between Storage and DAC modes before reconnecting the X5 to the computer for the switch to take effect.