

# DC-15S

## 15W全数字吉他功放



深圳市卓乐科技有限公司  
SHENZHEN JOYO TECHNOLOGY CO.,LTD

### 使用说明

#### 选择放大器类型

- 旋转AMP开关，使其指向不同的放大器类型。即可在9种放大器模型中任选一种作为您的基本吉他音色。
- ACOUSTIC:专用于木吉他的前置放大器，由于其平坦的频率响应特性及出色的低频表现，本放大器亦可用于其他要求全频回放的乐器，如电吹管、电子鼓、电子琴等。
  - JC CLEAN：拥有更多中频的CLEAN音色。
  - CLEAN：中频做少许衰减的CLEAN音色。
  - OVER DRIVE：柔和的电子管过载音色。
  - BLUES：谐波更丰富的过载音色。
  - CRUNCH：模拟MI Audio的CrunchBox失真单块。
  - LEAD：肥厚的HI-GAIN LEAD音色。
  - RHYTHM：更强调中高频的HI-GAIN节奏音色。
  - METAL：模拟BOSS的MT2重金属效果器。

#### 调整放大器增益

在选择好放大器后，即可通过调整GAIN来调整放大器的增益。顺时针方向旋转时，放大器增益将获得更大的提升，逆时针方向旋转时，放大器增益将变小，您可以灵活地设置此旋钮，来获得您喜欢的音色。

#### 调节放大器的音色明亮度

通过调节TONE旋钮，即可调节放大器音色的明亮度，顺时针方向旋转时，声音将变得明亮，逆时针方向旋转时，音色将变暗。

#### 调整总输出音量

旋转VOLUME旋钮，即可调整DC-15S的总音量。  
注：过大音量将对您的听力将产生损害，请注意保护您的听力。

#### 选择调制类效果

通过旋转EFFECTS旋钮，让旋钮的指针落在您想要的效果区域内，即可选择4种调制效果中的其中一个来润色您的音乐。可以看到面板上刻度有着渐渐地由窄变宽的变化，它在这些效果中的调节作用是：  
CHORUS：合唱效果，调节合唱效果的效果深度。  
FLANGER：镶边效果，调节镶边效果的效果深度。  
PHASER：相位效果，调节相位效果的时间长度。  
TREMOLLO：颤音效果，调节颤音效果的颤音调制频率。

#### 选择空间模拟类效果

通过旋转SPACE旋钮，让旋钮落在您想要的空间效果区域内，即可选择2种空间模拟效果中的一种来润色您的音乐。可以看到面板上刻度有着渐渐地由窄变宽的变化，它在这些效果中的调节作用是：  
DELAY：延迟效果，调节延时效果的时间长度。  
REVERB：混响效果，调节混响效果器的干湿比。

#### 设置PRESET音色

切换PRESET音色：DC-15S可以预置两个音色，可以通过按下PRESET键或踩下踏板上的PRESET脚踏开关，切换PRESET音色，PRESET指示灯将会亮起或熄灭，指示当前正在调用哪个设置。  
保存PRESET设置：要保存当前设置，您可以按住PRESET按键不放约2秒，此时PRESET指示灯开始闪烁，表示当前设置正在被保存，保存完毕后，指示灯停止闪烁并恢复到原来的指示状态。

#### RHYTHM 模块（鼓机）

打开或关闭RHYTHM功能：用户可以通过按下RHYTHM开关打开或关闭RHYTHM功能。  
选择鼓花：RHYTHM模块开启后，用户可以通过旋转RHYTHM开关来选择鼓花，DC-15S总共由36种可供选择的鼓花，详情请参考鼓花列表。  
调整速度：用户可以通过使用TAP TEMPO按键来设定鼓机速度，DC-15S记录两次以上的按下时间间隔，作为RHYTHM模块的速度标准。  
\* 注意！TEMPO设置的节拍只针对鼓机有效。

调整RHYTHM音量：用户可以通过调整RHYTHM VOLUME旋钮来设定合适的鼓机音量。

### 感谢购买我们的产品!

在使用DC-15S音箱之前，请您务必仔细阅读本产品使用说明书，详细了解本产品使用中的一些事项，以便更好地发挥DC-15S的性能和更安全地使用本产品。

虽然DC-15S看起来不起眼。不过同样的价格下，它绝对是您能买到的功能最齐全的吉他音箱，并且在同等价钱的音箱中，它的音色也不会输给任何其他产品。

DC-15S作为第一代DC-15的升级产品，增加了多种输出接口。由于现代网络直播行业的迅猛发展，我们在设计这款音箱时，不仅考虑到普通乐器音箱的应用场景，还考虑到直播场景的应用。在DC-15S上增加了可用于iOS和Android手机的输出接口，方便不同系统的手机用户在做音乐直播表演时可直接使用DC-15S音箱。DC-15S还增加了线路输出接口(LINE OUT)，连接到声卡后，可对使用DC-15S演奏的乐器进行实时录音，也可通过声卡连接其他监听音箱，为DC-15S演奏的乐器进行扩展监听。DC-15S还为演奏者提供了一个踏板控制器，可更快捷方便地操控音箱，踏板具备切换预置音色，控制LOOPER录音功能。

DC-15S拥有9种放大器音色，它们包括ACOUSTIC、JC CLEAN、CLEAN、OVER DRIVE、BLUES、CRUNCH、LEAD、RHYTHM以及METAL音色。DC-15S同样附带有四种调制效果，包括CHORUS、FLANGER、PHASER以及TREMOLLO。另外DC-15S还附加有两种空间模拟效果，DELAY和REVERB。与其它同等价位产品不同的是，DC-15S还为您准备了一套拥有36种节奏类型，速度及音量都可调整的电子节奏系统，为您的演奏练习增加更多乐趣。

DC-15S的外部辅助输入功能(AUX IN)以及蓝牙音乐播放功能，使您可以外接MP3、CD，或者通过蓝牙连接手机等外部设备，让您一边播放喜欢的音乐，一边随着音乐演奏。如果您想提升您的乐趣，那没有比跟着让您心动的音乐，来一段即兴演奏更好的方法了。不想吵到其他人，希望安静地练习? DC-15S同样为您准备了耳机驱动输出，戴上耳机，安安静静，您就可以尽情地让音符咆哮而出。DC-15S还拥有线路输出接口，可直接接驳至调音台或者电脑声卡，现在就试一试，看看您能发现什么。

### 重要的安全说明



#### 注意：

机内无用户可用备件！为了防止触电，切勿自行拆开机盖！必要时需由专业人士维修！

#### 警告：

为防止发生火灾或触电危险，本机切勿受雨淋或受潮！



等边三角形中带有闪电型箭头，该符号用来告诫用户---机内具有危险电压的非绝缘部分，易造成电击的危险。



等边三角形中带有感叹号，该符号用来提醒用户---机器附件中有重要的操作和保养说明，请查阅使用说明书。

#### 鼓节奏型附表

序号	节奏型	序号	节奏型	序号	节奏型
01	beat_8_1	13	beat_Punk	25	beat_Dance_4
02	beat_8_2	14	beat_DnB	26	beat_3per4
03	beat_8_3	15	beat_Funk_1	27	beat_6per8
04	beat_8_shuffle	16	beat_Funk_2	28	beat_5per4_1
05	beat_16_1	17	beat_Hiphop	29	beat_5per4_2
06	beat_16_2	18	beat_RnR	30	beat_Latin
07	beat_16_shuffle	19	beat_Pop_1	31	beat_Ballad_1
08	beat_Rock	20	beat_Pop_2	32	beat_Ballad_2
09	beat_Hard	21	beat_Pop_3	33	beat_Blues_1
10	beat_Metal_1	22	beat_Dance_1	34	beat_Blues_2
11	beat_Metal_2	23	beat_Dance_2	35	beat_Jazz_1
12	beat_Thrash	24	beat_Dance_3	36	beat_Jazz_2

#### LOOPER模块

LOOPER工作状态指示灯：双色灯，红色为录音或叠录，绿色为播放，熄灭为停止，UNDO或CLEAR时红灯闪烁。  
RECORD：在录音数据为空的情况下，按下LOOPER开关或踩下踏板上的LOOPER开关，启动初次录音，红色指示灯亮起。  
DUB：在播放状态下，按下LOOPER开关或踩下踏板上的LOOPER开关，进入DUB功能，指示灯变成红色。  
PLAY：在RECORD或DUB状态下，按下LOOPER开关或踩下踏板上的LOOPER开关，进入播放状态，指示灯变成绿色。  
UNDO / REDO：在PLAY状态下，按下LOOPER开关或踩下踏板上的LOOPER开关，可撤销或恢复上一次DUB，此时红色指示灯闪烁，直到数据撤销或恢复完毕，注意初次录音无法被撤销。  
CLEAR：在PLAY或DUB状态下，双击LOOPER开关或双踩踏板上的LOOPER开关，并保持1秒以上，所有录音数据将被清除，此时红灯闪烁直到数据清除完毕。  
注：**LOOPER**与鼓机同步工作。

#### 蓝牙连接

DC-15S内建有蓝牙通信单元，您可以使用带有蓝牙功能的设备与DC-15S进行连接并播放音乐。要使用本功能，您可以按照下面的方式来操作您的DC-15S。

- 长按蓝牙开关，启动蓝牙，蓝牙指示灯点亮并闪烁；
- 打开移动设备的蓝牙功能，在设备列表中找到“DC-15S”，并进行配对。成功配对后，蓝牙指示灯将保持常亮状态。

#### 自动关机

如果5分钟内DC-15S没有检测到来自吉他输入或其他输入的音乐信号，DC-15S将自动关机，以节约能源，要重新打开DC-15S，您必须重新关闭DC-15S的电源开关，并等待5秒后重新打开电源开关。

#### 电池与电源

当DC-15S内置电池电量过低时，电源指示灯会闪烁，您需要及时为DC-15S充电，若5分钟内DC-15S没有检测到适配器接入，DC-15S将自动关机以保护电池不被过度放电。  
充电时，电源指示灯将变成蓝色，在开机状态下，电池充满后，电源指示灯将由蓝色变成红色，表示电池已充满；在关机状态下，电池充满后电源指示灯将自动熄灭。

**注意：由于锂电池的安全特性，请勿在无人监管的情况下对机器进行充电，充电时，请确保机器与周围可燃物保持充分距离。**

**注意：请勿低电存放DC-15S，如不使用，请至少为DC-15S充电40分钟以上，以延长电池使用寿命。**

### 注意事项

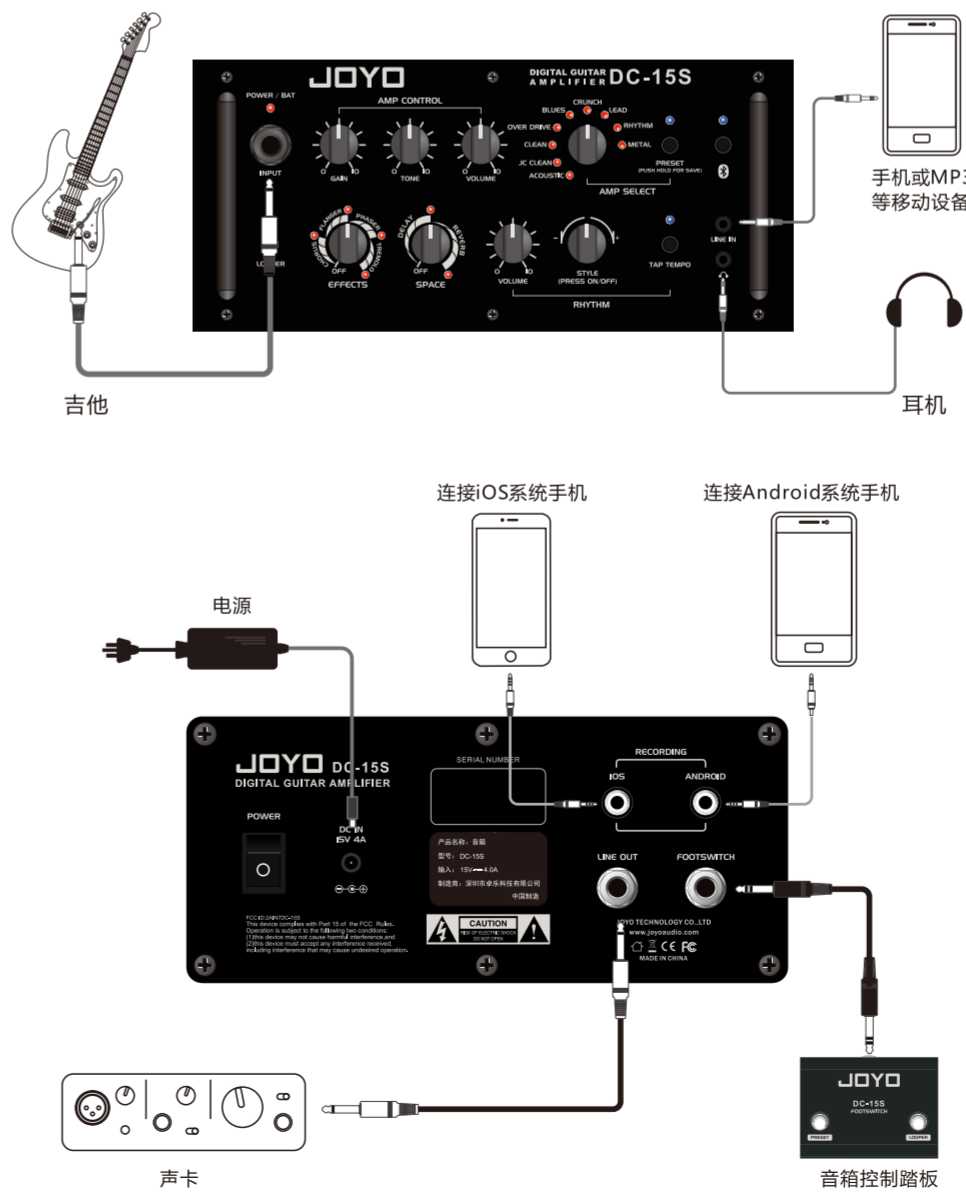
请阅读使用说明书。

- 请阅读这里的说明。
- 请保存这些说明。
- 请注意所有的警告说明。
- 请按照说明操作。
- 不要在靠近水的地方使用这一设备。
- 请用干布清理本设备。
- 不要堵住通风口。请按照制造商的说明安装设备。
- 不要在靠近热源的地方使用本设备，如加热器、暖气机、电热炉、功放器等各种易发热设备。
- 不要损坏带有不同极性或接地功能的插头。有极性的插头带有两个大小不同的插片。有接地功能的插头有两个插针和接地插针。大的插针或第三个插针有接地功能，确保您的安全。如果随货供应的插头不能使用的话，请找电工更换老旧的插座。
- 电源线不要放在可能被踩到的地方，也要避免有尖角的地方。请特别保护插头，延长线和设备上的电源线。
- 本设备一定要有接地保护。
- 如果电源插头或电源连接板有切断电源功能的话，它们一定要处在随时都能被拿到的地方。
- 请只使用制造商规定的附加设备和零件。
- 请只使用制造商规定的推车，架子，三角架，支架和桌子。也可用随货供应的器件。如果您使用推车来搬移设备的话，请注意安全放置设备，以避免倒下而造成的伤害。



- 有风暴雷雨时或长期不使用本设备的时候，请拔出电源插头。
- 所有维修工作，都必须由有资格的维修人员进行。设备受到损坏时，（如：电源线或电源插头被损坏，水或液体流入设备内，设备受到雨淋或受到潮气侵入，设备不能正常工作，设备摔在地上后），必须进行维修。
- 注意！维修提示是给有资格的维修人员看的，为了避免触电的危险，请不要擅自进行维修。有资格的专业维修人员才能对设备进行维修。

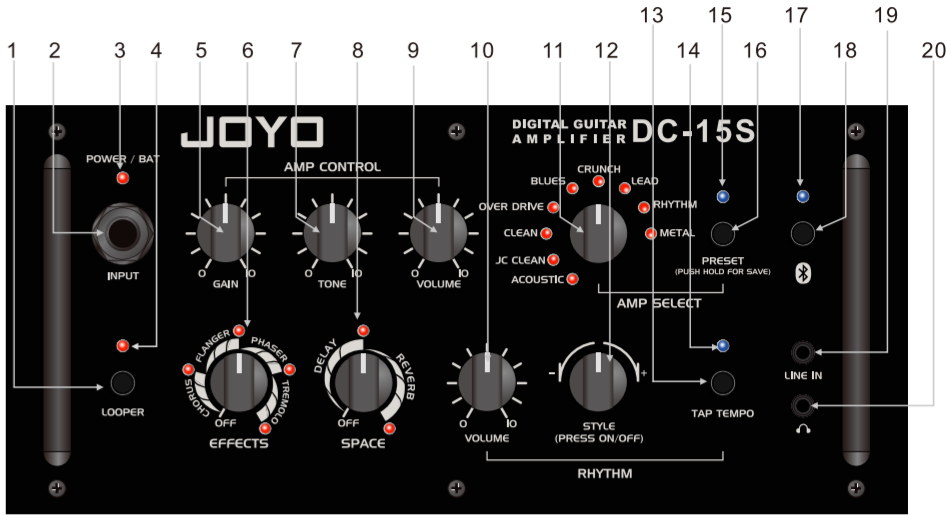
### 设备连接示意图



### 产品特点

- 1种木吉他专用前级放大器
- 8种电吉他专用前级放大器
- 4种周边类效果
- 2种空间模拟类效果
- 最多支持2个可调用的用户预设(PRESET)
- 内置鼓机模块
- 内置30秒循环录音(LOOPER)单元
- 内置蓝牙模块，用于音乐或伴奏播放
- 内置iOS及Android移动设备音频接口
- 内置锂电池，可充电，满足户外使用需求
- 已附带外接控制踏板
- 用于连其他音箱设备的LINE OUT接口

### 面板介绍



1. LOOPER循环录音按钮
2. 吉他输入插口
3. 电源灯/电池电量状态灯
4. LOOPER状态指示灯
5. 增益控制旋钮
6. 周边效果选择旋钮
7. 音色明亮度控制旋钮
8. 混响/延迟效果选择旋钮
9. 吉他音量旋钮
10. 鼓机音量旋钮
11. 放大器选择开关
12. RHYTHM开关
13. TAP TEMPO按钮
14. LOOPER速度指示灯
15. PRESET指示灯
16. PRESET开关
17. 蓝牙指示灯
18. 蓝牙开关
19. 辅助输入接口
20. 耳机输入接口



21. 电源开关
22. DC IN 15V 4A电源接口
23. iOS系统设备的输出接口
24. 线路输出接口
25. 音箱踏板接口
26. Android系统设备的输出接口

### 技术参数

AC适配器输入电压：AC100-240V 50-60Hz  
AC适配器输出电压：DC15V/4A  
内置电池：11.1V/4.4Ah(锂电池)  
吉他通道输入灵敏度：-27.08dBV  
LINE IN输入灵敏度：-2.28dBV  
RMS功率：15W  
LINE OUT输出阻抗：1K欧姆  
RECORDING输出阻抗：iOS 1K欧姆；ANDROID 4.7K欧姆  
耳机阻抗：32欧姆  
喇叭尺寸口径：中低音喇叭5.25寸/4欧姆/20W；2.5寸方形8Ω/15W  
蓝牙版本号：4.0  
LOOPER时间：30s

### 配件清单

踏板连接线×1  
电源线×1  
控制踏板×1  
3.5mm 4PIN线×1

卓乐产品服务政策		卓乐产品保修卡	
一、在正常使用产品过程中，如果产品出现非人为损坏的性能故障，自购买之日起，消费者享有保修服务，保修期为12个月。	产品型号	姓名	SN号码
二、有下列情况之一者，消费者不能享受保修权益。	用户信息	电话	购机日期
1. 人为损坏；2. 超过保修期；3. 无保修卡及有效发票，但能够证明产品在保修期内的除外；4. 保修卡与产品型号不符，或保修卡被篡改；5. 未按说明要求使用、维护、保养而造成产品损坏；6. 未经卓乐公司授权，擅自拆卸、维修产品、或浸水、摔坏产品；7. 其他不可抗力造成的损坏。		地址	发票号码
三、卓乐售后服务：0755-29765390	销售单位信息	名称（加盖公章）	地址
更多详情请访问：www.joyochina.cn		电话	电话

品牌:JOYO 名称:电吉他音箱  
执行标准:QB/T 4326-2012  
制造商:深圳市卓乐科技有限公司  
地址:广东省深圳市宝安区28区新安三路陆氏工业大厦2楼 邮编:518133  
售后服务热线:0755-29765390

产品合格证	
检验结论	合格
检验员号	QC 01
日期	



# DC-15S

## 15W Digital guitar amplifier



### Owner's Manual

SHENZHEN JOYO TECHNOLOGY CO.,LTD

Thank you for purchasing this product!

In order to use it properly and safely, please read this owner's manual carefully before operating it. DC-15S seems to be an unremarkable amp, however, it's good value for money due to its versatility, besides, it outshines other competitors with the same price by its fabulous tone.

As an upgraded version of DC-15, DC-15S features several Output Jacks. Due to the rapid rise in the popularity of live video streaming, we've taken both live streaming venue and normal amp's venues into consideration. We've added Output Jack for cell phones with iOS and Android systems, convenient for hosts to use DC-15S during live video streaming. Moreover, DC-15S has LINE OUT, not only can you record while playing the instruments once connect it to sound card, but also connect to other monitor amps by the sound card. DC-15S has a user-friendly Footswitch, you can adjust the PRESETS, control LOOPER's recording function by the Footswitch.

DC-15S has 9 amp tones, including ACOUSTIC, JC CLEAN, CLEAN, OVER DRIVE, BLUES, CRUNCH, LEAD, RHYTHM and METAL. It features 4 modulation effects, including Chorus, Flanger, Phaser and Tremolo. With 2 space simulation effects: Delay and Reverb. Compared with rivals' products of the same price, DC-15S offers 36 drum patterns, both Tempo and volume can be adjusted, making your practice or performance an pleasant enjoyment. AUX IN and Bluetooth music playing functions enable you to connect it to MP3, CD, or cell phone and other external devices through Bluetooth, so you can play along to your favorite song when the music starts to play. Choose your favorite song and play a riff to improve your guitar playing. You can also connect it to headphones to practice quietly by the Headphones Output. Its LINE OUT can be used to connect to the Mixer or PC's sound card directly, just give it a try.



#### INSTRUCTIONS PERTAINING TO A RISK OF FIRE, ELECTRIC SHOCK, OR INJURY TO PERSONS.



The lightning flash with arrowhead symbol, within an equilateral triangle, is intended to alert the user to the presence of uninsulated "dangerous voltage" within the product's enclosure that may be of sufficient magnitude to constitute a risk of electric shock to persons.



The exclamation point within an equilateral triangle is intended to alert the user to the presence of important operating and maintenance (servicing) instructions in the literature accompanying the product.

### IMPORTANT NOTES

#### Please read the Operating Instructions:

- Read these instructions.
- Keep these instructions.
- Heed all warnings.
- Follow all instructions.
- Do not use this apparatus near water.
- Clean only with a dry cloth.
- Do not block any of the ventilation openings. Install in accordance with the manufacturers instructions.
- Do not install near any heat sources such as radiators, heat registers, stoves, or other Apparatus (including amplifiers) that produce heat.
- Do not defeat the safety purpose of the polarized or grounding-type plug. A polarized plug has two blades with one wider than the other. A grounding type plug has two blades and a third grounding prong. The wide blade or the third prong are provided for your safety. When the provided plug does not fit into your outlet, consult an electrician for replacement of the obsolete outlet.
- Protect the power cord from being walked on or pinched particularly at plugs, convenience receptacles, and the point where they exit from the apparatus.
- Only use attachments/accessories specified by the manufacturer.
- Never use with a cart, stand, tripod, bracket, or table except as specified by the manufacturer's, or sold with the apparatus. When a cart is used, use caution when moving the cart/apparatus combination to avoid injury from tip-over.

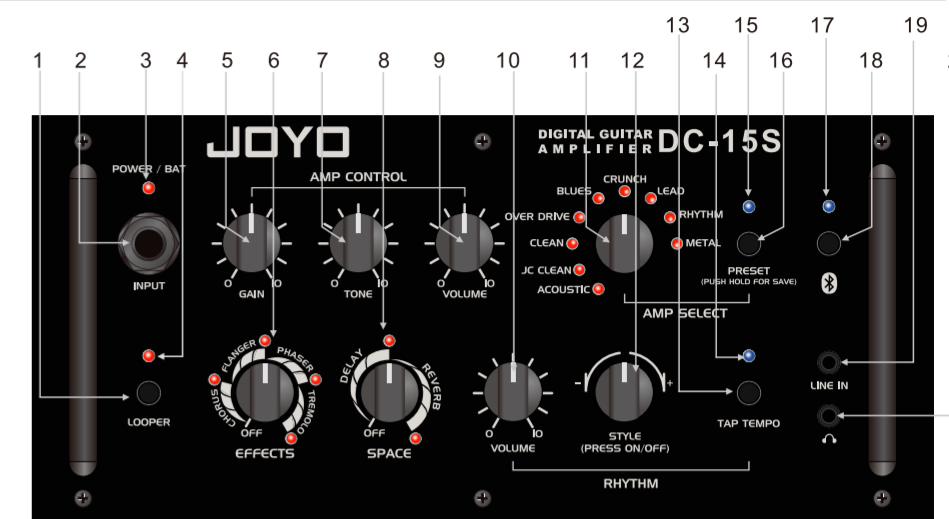


- Unplug this apparatus during lightning storms or when not in use for long periods of time.
- Refer all servicing to qualified service personnel. Servicing is required when the apparatus has been damaged in any way, such as power-supply cord or plug is Damaged, liquid has been spilled or objects have fallen into the apparatus, the apparatus has been exposed to rain or moisture, does not operate normally, or has been dropped.

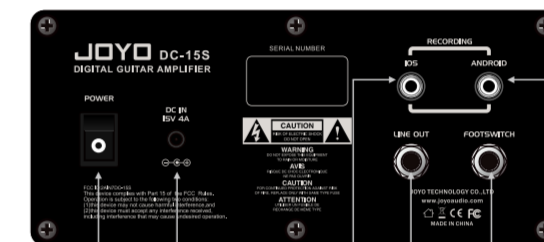
### PRODUCT FEATURES

- 1 preamp model dedicated for acoustic guitar
- 8 preamp models dedicated for electric guitar
- 4 built-in modulation effects
- Built-in Delay and Reverb Effects
- With 2 adjustable PRESETS
- Built-in Drum machine
- Built-in LOOPER with 30 seconds' recording time
- Built-in Bluetooth 4.0 for music or backing track playing
- Built-in portable device audio interface for iOS & Android devices
- Built-in rechargeable lithium battery for outdoor use
- A Footswitch is included
- 1 LINE OUT for connecting to other amps

### PANEL



1. LOOPER cycle recording button
2. Guitar Input Jack
3. Power indicator/battery status indicator
4. LOOPER status indicator
5. Gain control knob
6. Modulation effects knob
7. Tone control knob
8. REVERB/DELAY selection knob
9. Guitar volume knob
10. Drum machine volume knob
11. AMP selection switch
12. RHYTHM switch
13. TAP TEMPO button
14. TAP TEMPO indicator
15. PRESET indicator
16. PRESET switch
17. Bluetooth indicator
18. Bluetooth switch
19. AUX IN Jack
20. Headphones Input Jack



21. Power switch
22. DC IN 15V 4A Power Jack
23. Output Jack for devices with iOS system
24. LINE OUT
25. Footswitch Jack
26. Output Jack for devices with Android system

### INSTRUCTIONS

#### Select an amplifier mode

Rotate the AMP switch and choose one model from the 9 AMP models as your basic guitar tone.

1. ACOUSTIC: specially designed for acoustic guitar amp, due to its frequency response and bass, it's suitable for digital wind instruments, such as electronic drums, synthesizers, etc.
2. JC CLEAN: the clean tone features more mid frequency.
3. CLEAN: the clean tone's mid frequency has been attenuated a little bit.
4. OVER DRIVE: soft tube Overdrive tone.
5. BLUES: this tone features more harmonic distortion.
6. CRUNCH: simulates MI Audio's CrunchBox distortion pedal.
7. LEAD: rich HI-GAIN LEAD tone.
8. RHYTHM: features mid frequency and high frequency's HI-GAIN rhythm tone.
9. METAL: simulates BOSS's MT2 Metal Zone distortion pedal.

#### Adjust the Gain of the selected amplifier

You can adjust the Gain level by rotating the GAIN knob. Turn it clockwise will increase the Gain, turn it counterclockwise will reduce the Gain, you can adjust this knob as you like.

#### Adjust the selected amplifier's TONE

You can adjust the amp's brightness by rotating the TONE knob. Turn it clockwise, the tone becomes much brighter, turn it counterclockwise, the tone becomes much darker.

#### Adjust the Master volume

You can adjust the master volume of DC-15S by the VOLUME knob.

**Note: If it's too loud, it can damage hearing.**

#### Select Modulation effects:

Rotate the EFFECTS knob and choose one from Chorus, Flanger, Phaser and Tremolo to beautify your music. You can select the effects by reading the scales shown on the panel.

#### Select space simulation effects:

Rotate the SPACE knob to choose between Delay and Reverb space simulation effects. You can select the effects by reading the scales shown on the panel.

Delay: adjust delay effect's time.

Reverb: adjust Reverb effect's Dry/Wet Ratio.

#### Set PRESET tone:

Switch the PRESET tone: You can press PRESET button or PRESET Footswitch to set 2 tones of DC-15S.

PRESET indicator's color illuminates or goes out when you change PRESET tone, indicating the current chosen tone.

SAVE PRESET setting: Press PRESET button for about 2 seconds to save the current setting. Now the PRESET indicator starts to flicker, indicating the current setting is being saved, after it's been saved, the PRESET Indicator stops flickering and returns to the original status.

#### RHYTHM Module(Drum machine)

Turn on or turn off RHYTHM function:

Select fills: you can select fills by rotating RHYTHM switch after the RHYTHM module is turned on. DC-15S has 36 fills in all, please refer to the drum patterns list for details.

Adjust tempo: you can set drum machine's tempo by the TAP TEMPO button, DC-15S records intervals that you pressed over 2 times as standard tempo of RHYTHM module.

**\*Note: Tempo setting only works on the drum machine.**

Adjust RHYTHM volume: you can adjust the drum machine's volume by the RHYTHM VOLUME knob.

#### Drum patterns list

01	beat_8_1	13	beat_Punk	25	beat_Dance_4
02	beat_8_2	14	beat_DnB	26	beat_3per4
03	beat_8_3	15	beat_Funk_1	27	beat_6per8
04	beat_8_shuffle	16	beat_Funk_2	28	beat_5per4_1
05	beat_16_1	17	beat_Hiphop	29	beat_5per4_2
06	beat_16_2	18	beat_RnR	30	beat_Latin
07	beat_16_shuffle	19	beat_Pop_1	31	beat_Ballad_1
08	beat_Rock	20	beat_Pop_2	32	beat_Ballad_2
09	beat_Hard	21	beat_Pop_3	33	beat_Blues_1
10	beat_Metal_1	22	beat_Dance_1	34	beat_Blues_2
11	beat_Metal_2	23	beat_Dance_2	35	beat_Jazz_1
12	beat_Thrash	24	beat_Dance_3	36	beat_Jazz_2

#### LOOPER Module

LOOPER indicator: Bi-color LED light, red means record or overdub, green means play, goes out means stop, the red light flickers when Undo or Clear.

RECORD: when the recording data is empty, press LOOPER switch or tap it to activate first recording, the red indicator is on.

DUB: In PLAY status, press LOOPER switch or tap it to enter DUB function, the indicator becomes red.

PLAY: In RECORD or DUB status, press LOOPER switch or tap it to enter PLAY status, the indicator becomes green.

UNDO/REDO: In PLAY status, press LOOPER switch or tap it to UNDO or REDO the previous DUB, now the red indicator is flickering until it's done. Please note that the first recording cannot be UNDO.

CLEAR: In PLAY or DUB status, press LOOPER switch twice or tap it twice and keep more than 1 second, all the recorded data will be deleted, now the red indicator is flickering until it's done.

**Note: LOOPER is in synch with drum machine.**

#### Bluetooth connection

DC-15S features built-in Bluetooth communication units, you can connect DC15S to devices with Bluetooth function to play music. For details, please operate it according to the following procedures.

① Long press Bluetooth switch and turn on Bluetooth, the Bluetooth indicator is on and starts to flicker;

② Turn on portable devices' Bluetooth function, find DC-15S in the device list, and start to pair up. When they're paired successfully, the Bluetooth indicator is in blue.

#### Automatic shutdown

If DC-15S doesn't detect any music signal from guitar input or other input, it will shut down automatically to save electricity, if you want to turn on DC-15S again, you need to turn off its power switch first, and then wait for 5 seconds, turn on the power switch.

#### Battery and power supply

The power indicator will flicker when the built-in battery is quite low, it needs to be charged immediately, if it doesn't detect adapter in 5 minutes, DC-15S will shut down automatically to avoid over-discharge.

The power indicator becomes blue while charging, when the unit is on, the power indicator changes from blue to red once it's fully charged, when the unit is off, the power indicator goes off once it's fully charged.

**Note: In order to use the lithium battery safely, don't charge it when nobody is nearby, and keep the unit away from inflammable materials.**

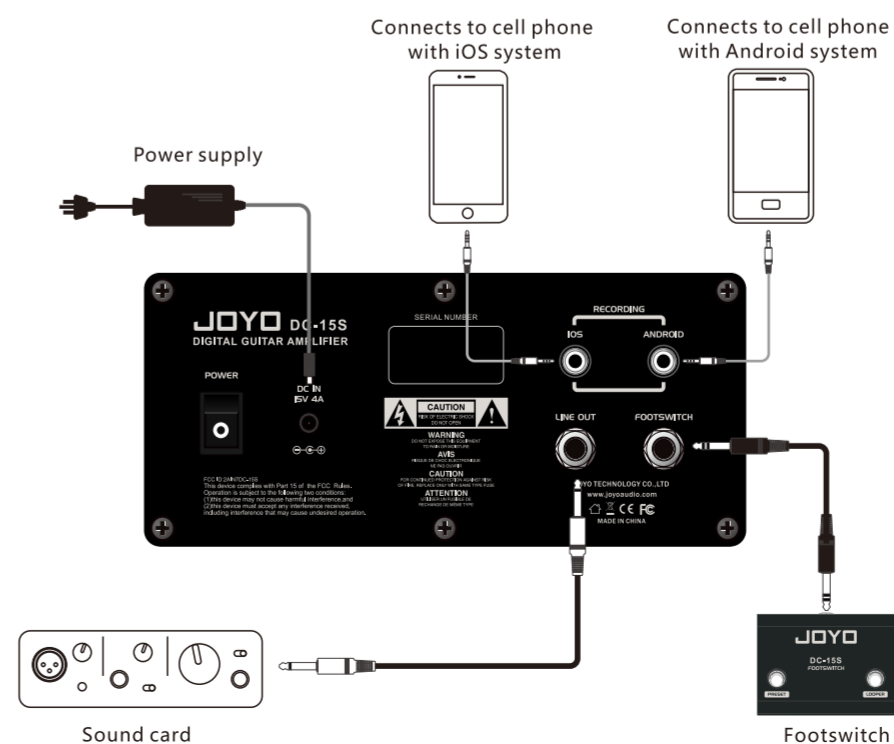
**Note: Don't keep it when it's in low battery condition, please charge it for at least 40 minutes when not in use, so as to protect the battery.**

### CONNECTION DIAGRAMS



Guitar

Headphones



Sound card

Footswitch

### SPECIFICATIONS

AC adapter input voltage: AC100-240V 50-60Hz

AC adapter output voltage: DC15V/4A

Built-in battery: 11.1V/4.4Ah (lithium battery)

Guitar input sensitivity: -27.08dBV

LINE IN input sensitivity: -2.28dBV

RMS: 15W

LINE OUT Output Impedance: 1KΩ

RECORDING Output Impedance: iOS 1KΩ; ANDROID 4.7KΩ

Headphone Impedance: 32Ω

Speaker's dimensions: Midrange speaker and woofer 5.25-inch/4Ω/20W;  
2.5-inch square 8Ω/15W

Bluetooth version: 4.0

LOOPER time: 30s

### PACKAGE CONTENT

- Footswitch's cable × 1
- Power cable × 1
- Power adapter × 1
- Footswitch × 1
- 3.5mm 4 pin cable × 1

# JOYO

JOYO TECHNOLOGY CO., LTD

Address: 2/F, Lushi Industry Building, 28th District, Bao'an, Shenzhen, 518101 China.  
www.joyoaudio.com Email: info@joyoaudio.com Tel: 0086-755-29765381