



Shadow series

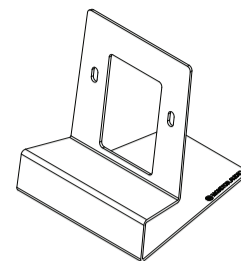
INSTALLATION INSTRUCTIONS

monitoraudio.com

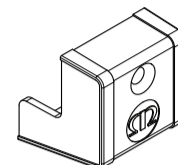
CONTENTS

Product.
Shadow 25 (Left & Right)
Shadow 50 (Left & Right)
Shadow 60 (Left & Right)
Shadow Centre

Shadow 25
Table Stand (x2)
and Fixings.
(Shadow 25 only)

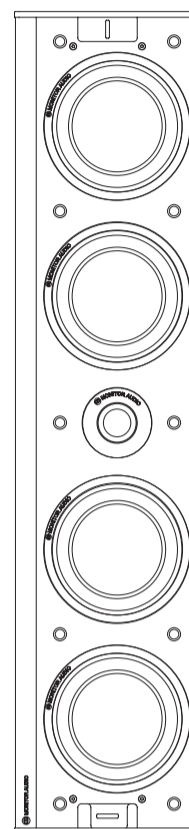


Shadow Centre
Table Stand (x2)
and Fixings.
(Shadow Centre only)



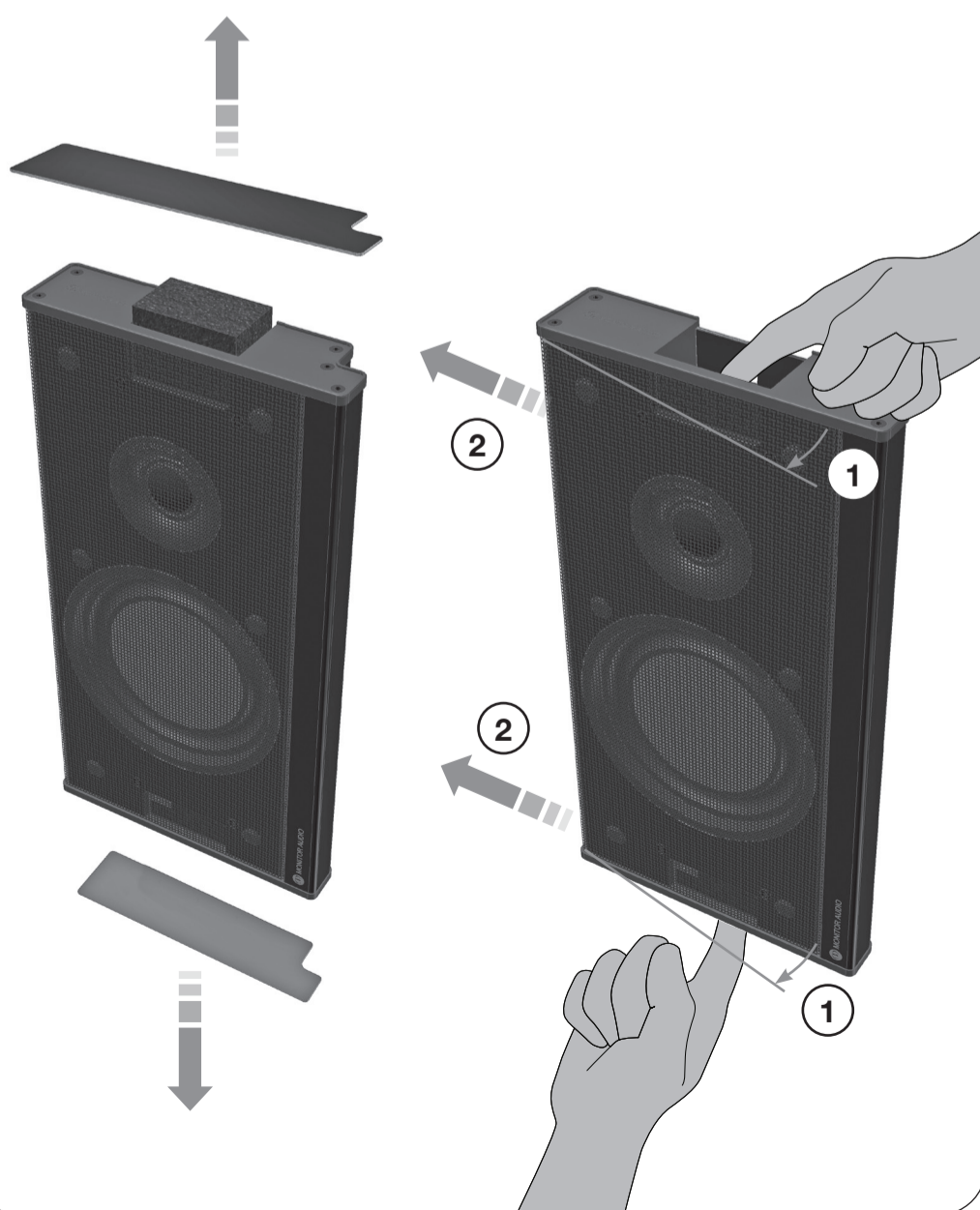
Grille, chrome in-lays and
blanking foam are attached to
the product.

Wall fixings not supplied.

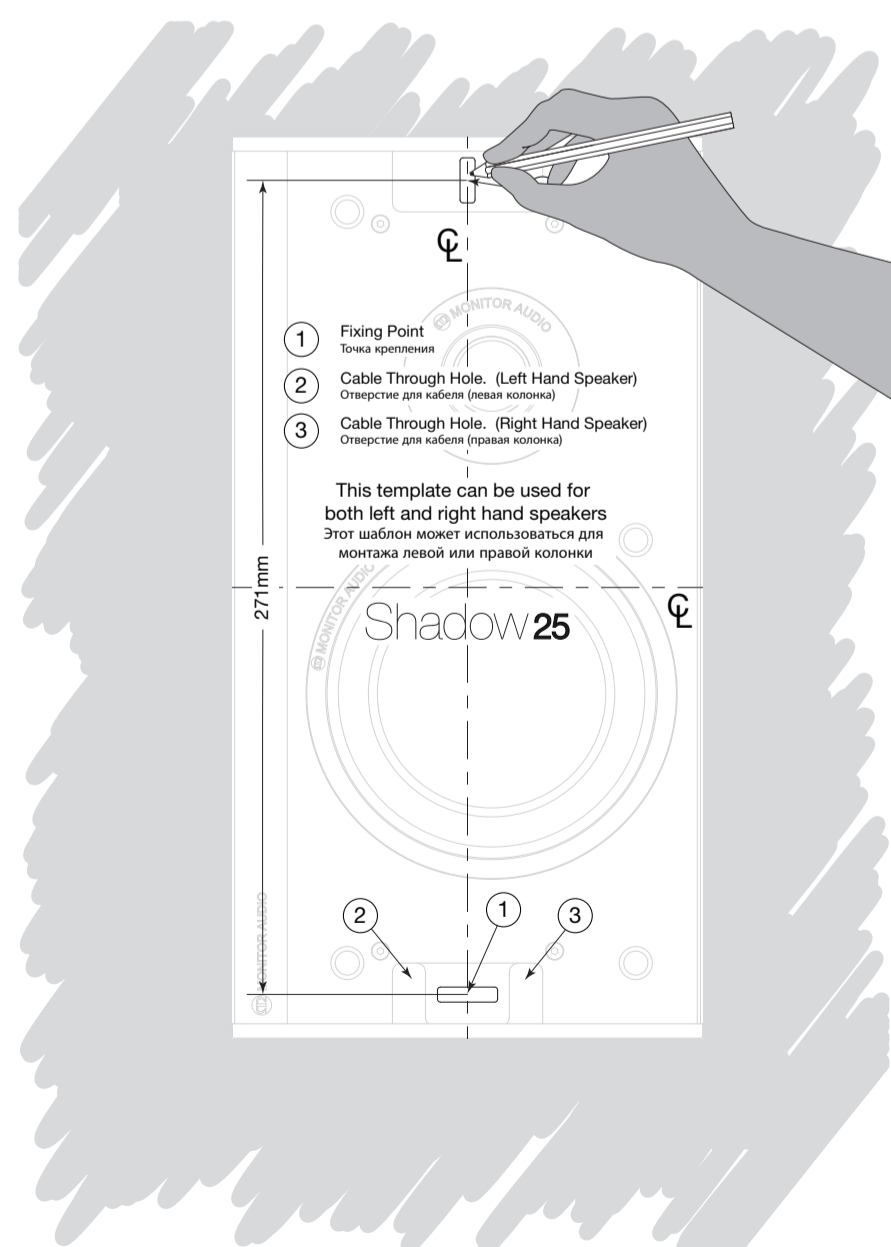


WALL FIXING All Shadow products

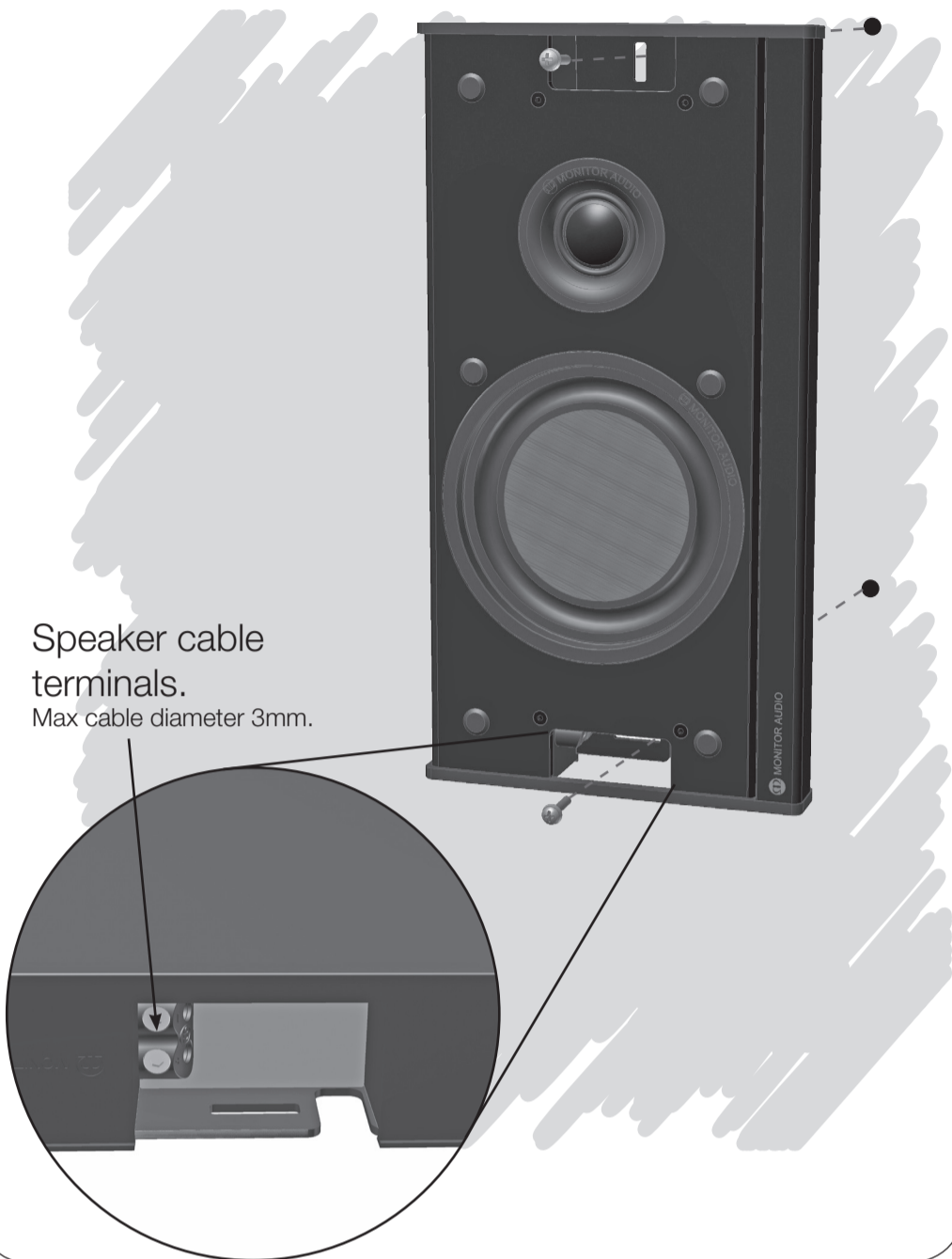
- 1 Remove chrome in-lays, foam and grille (being careful not to touch the tweeter dome).



- 2 Use template to mark wall fixing points.
Drill hole according to desired fixing method.



- 3** Clamp cables in terminals and fix product to wall. Right hand speaker shown.



- 4** Re-attach foam, chrome in-lays and grille(s).

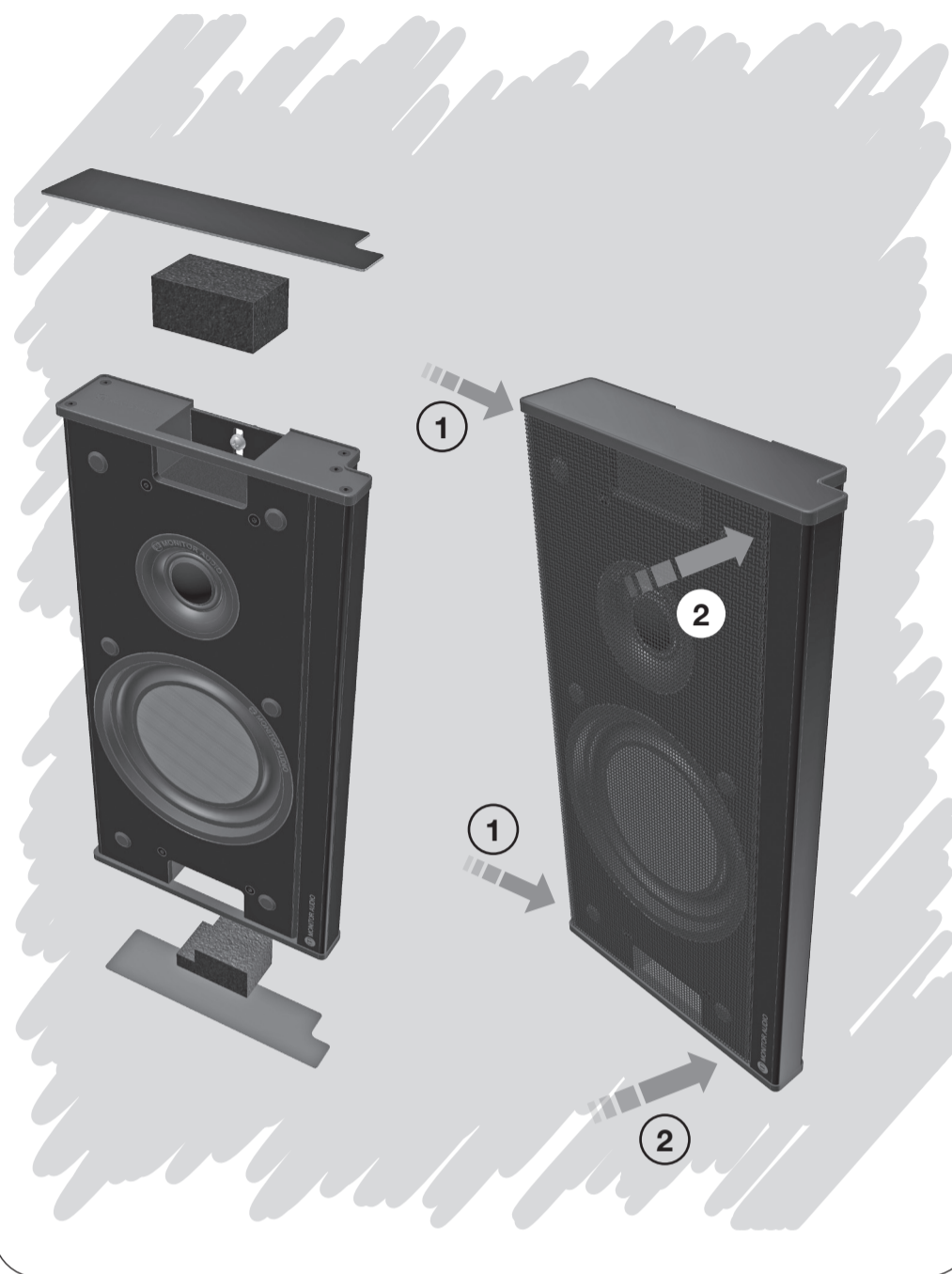
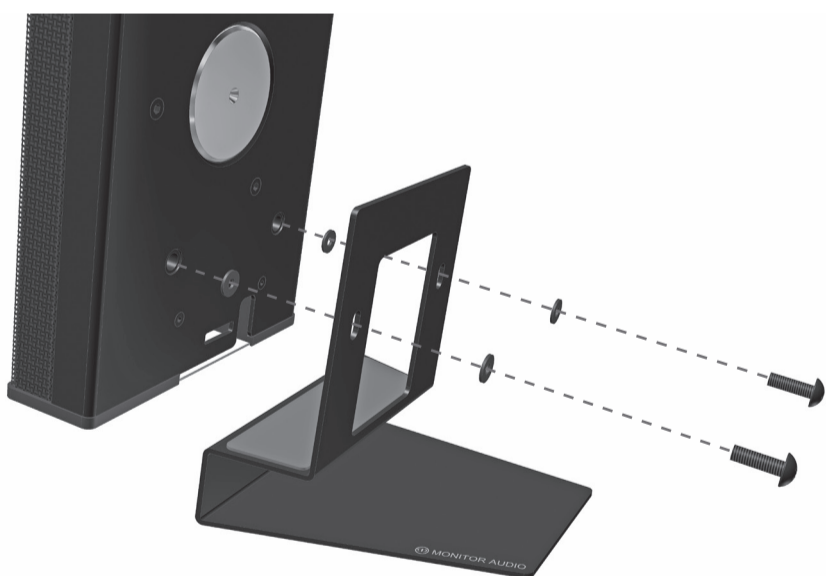
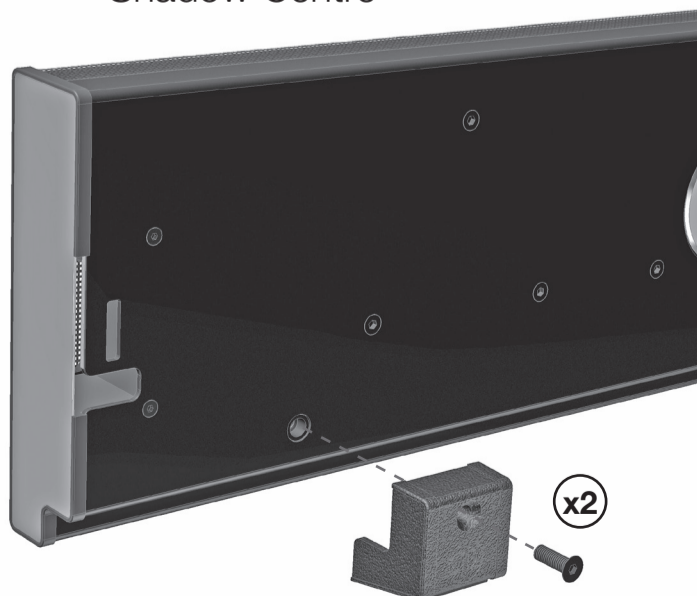


TABLE STAND ASSEMBLY

Shadow 25



Shadow Centre



SPECIFICATIONS

	Shadow 25	Shadow 50	Shadow 60 & Centre
Frequency Response	100Hz – 30kHz	80Hz – 30kHz	70Hz – 30kHz
Sensitivity	84dB	87dB	87dB
System Configuration	2- way	2- way	2- way
Driver compliment:	1 x 4" Flat diaphragm mid-bass driver 1 x 25mm C-CAM® tweeter with vented loading system	2 x 4" Flat diaphragm mid-bass drivers 2 x 4" Flat diaphragm ABR drivers 1 x 25mm C-CAM® tweeter with vented loading system	2 x 4" Flat diaphragm mid-bass driver 2 x 4" Flat diaphragm ABR drivers 1 x 25mm C-CAM® tweeter with vented loading system
Nominal Impedance	8 ohms	8 ohms	8 ohms
Maximum SPL (each @1M)	102.6 dBA	108.6 dBA	108.6 dBA
Power Handling (R.M.S)	60 watts	120 watts	120 watts
Recommended Amplifier Requirements (R.M.S)	25-60 watts	40-120 watts	40-120 watts
Bass Alignment	Sealed Box	ABR loading	ABR loading
Recommended L.P. Crossover Frequency	100-120Hz	80-100Hz	80-100Hz
Overall Dimensions (H x W x D)	300 x 156.6 x 40 mm 11 3/4 x 6 3/16 x 1 1/2"	686 x 156.6 x 40 mm 27 x 6 3/16 x 1 1/2"	815 x 156.6 x 40 mm 32 x 6 3/16 x 1 1/2"
Weight	1.68kg (3lb, 11oz)	3.24kg (7lb, 2oz)	3.72kg (8lb, 3oz)
Finishes	Black Anodised Aluminium		

© Monitor Audio Ltd
 24 Brook Road, Rayleigh
 Essex, SS6 7XJ
 England
 Tel: + 44 (0)1268 740580
 Fax: + 44 (0)1268 740589
 Email: info@monitoraudio.co.uk
 Designed in the United Kingdom
 Version 1.