

S.M.S.L



Dp5 SE



使用说明书 | USER MANUAL

本说明书的内容可能会随版本更改, 如有变动, 恕不另行通知

The contents of this manual may be changed with the edition, and are subject to change without notice.

<http://www.smsl-audio.com/>

Ver 1.1

安全注意事项



注意
触电危险，
请勿打开。



注意：

为防电击，请勿打开机盖（或后盖）。本机内部无使用者可以维修的部件。请委托有资格的技术人员进行维修。



等边三角形中有箭头闪电标号的图形表示警告使用者在产品内有非绝缘的“危险电压”，可能会对人体造成很大的电击危险。



等边三角形中有感叹号的图形表示警告使用者该设备在操作与维护（维修）方面应严格按照所附设备说明书。



仅适用于海拔2000m以下地区安全使用。

重要提示：

本说明书所提到的产品规格和资讯仅供参考。如有内容更新，恕不另行通知。

注意：为了完全切断本机的电源，请从墙上插座中拔出插头。电源插头用于完全中断机器的电源供应。

- 全功能播放,支持DSD、WAV、APE、FLAC、AIFF、MP3等;
- 全面支持MQA硬件解码,包括本地播放和USB DAC;
- 全功能接口输出:USB,光纤,同轴, I²S, AES/EBU,单端模拟, 平衡模拟, 耳机 6.35mm;
- ES9039Q2M D/A芯片,超低THD+N(0.00009%),超高动态范围(126dB);
- SPDIF接口支持DOP和D2P输出;
- 3.5"大尺寸全视角IPS液晶显示屏;
- 全新设计的UI,操作更加直观;
- 支持有线和WIFI连接,支持2.4GHz和5GHz的WIFI;
- 支持流媒体播放,包括DLNA和AirPlay;
- 蓝牙支持APTX,并且支持发射和接收功能;
- 支持USB连接外置硬盘,最高支持到4TB容量,并且支持NTFS/FAT32格式;
- 支持USB DAC功能,可以连接电脑播放音乐;
- 内置高效率,低噪声开关电源;
- 具备耳机监听功能;
- 支持HiBy link,可以使用Hiby播放器控制本机功能;
- 钢化玻璃顶盖,简约大气,历久弥新!
- 全铝合金CNC精密加工机体;
- 全功能遥控!

温馨提示:

固件及驱动下载:<http://smsl-audio.com>

规格参数

- 输入方式: SD卡、局域网(SAMBA)、OTG1、OTG2
USB-DAC、DLNA、AirPlay、Bluetooth
- 输出方式: 模拟 RCA、XLR、HP(耳放)
数字 光纤、同轴、AES/EBU、I²S、BT、USB audio
- THD+N: 0.00009%
- 动态范围: 126dB (A计权)
- 信噪比: 126dB (A计权)
- 耳放输出功率: 89mW(32Ω)
64mW(64Ω)
27mW(150Ω)
14mW(300Ω)
- 非平衡线路输出电平: 2.1Vrms
- 平衡线路输出电平: 5.0Vrms
- USB Audio: DSD 最高支持 DSD256
PCM 最高支持 PCM384kHz
- USB Audio系统兼容性: Windows 7/8/8.1/10/11; Mac OS X; Linux

规格时有变更,恕不另行通知。

- 文件系统：支持 FAT/FAT32/NTFS
- micro SD卡容量：最高支持 256GB容量
- USB(U盘/硬盘)：最高支持 4TB容量
- USB 最大输出电流：2A(为两个 USB 输出电流总和)
- USB 单口最大输出电流：2A
- USB DAC 输出：支持
- 蓝牙版本：4.0 版本
- APT-X：支持
- 蓝牙输入：支持
- 蓝牙输出：支持
- HiBy Link：支持
- WIFI 功能：支持
- WIFI 规格：支持 2.4G/5G
- 网口规格：100Mb/s
- 文件浏览：支持
- 系统语言：简体中文、繁体中文、English
- 软件升级：支持
- 功率消耗：5W
- 待机：0.5W

规格时有变更,恕不另行通知。

格式	是否支持	条件	采样率*		位数	CUE	
			最低	最高			
APE**	√	FAST	8K	384K	16-24bit	√	备注
	√	Normal	8K	384K	16-24bit	√	
	√	High	8K	384K	16-24bit		
	√	Extra high	8K	96K	16-24bit		176/192K 不支持
	×	Insane	8K				
WAV	√		8K	384K	16-32bit	√	DIS 编码不支持
WMA	√		8K	96K	16-24bit		
WMA Lossless	√		8K	96K	16-24bit		
Flac	√		8K	384K	16-24bit	√	
DSF	√		2.8M	11.2M	1bit		
DFF	√		2.8M	11.2M	1bit		
ISO DSD	×						
ISO DST	×						
Aiff	√		8K	384K	16-32bit		
M4A	√		8K	384K	16-24bit		
Mp2	√		8K	48K	16bit		
Mp3	√		8K	48K	16bit	√	
AAC	√		8K	48K	16bit		
OGG	√		8K	48K	16bit		

注：

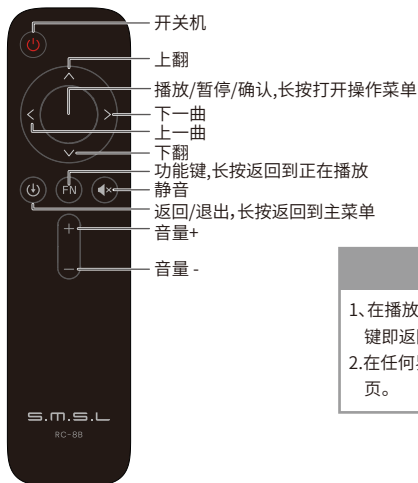
* 此处标记是采样率不是文件码率。

** Ape:32-192kHz 的 Insane 文件不支持。

176.4kHz,192kHz 的 Extra high 文件不支持。

*** ISO8 的文件不支持。

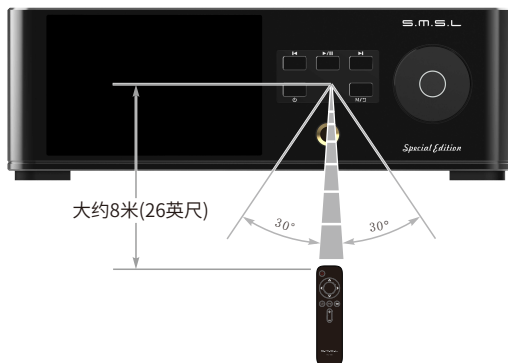
**** 所有64K文件不支持。

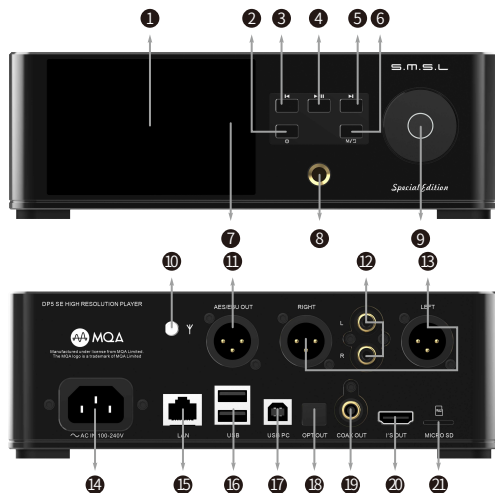


注意

1. 在播放音乐中任何界面下, 长按功能键即返回到“正在播放”界面。
2. 在任何界面下, 长按返回键, 即返回首页。

遥控器使用工作范围





- | | |
|-----------------------|---------------|
| ① 显示屏 | ⑫ 线路输出 |
| ② 电源按键, 长按开/关机, 短按熄屏* | ⑬ 平衡输出 |
| ③ 上一曲键, 短按上一曲, 长按快退** | ⑭ 电源AC输入 |
| ④ 播放/暂停 | ⑮ 网线接口 |
| ⑤ 下一曲键, 短按下一曲, 长按快进 | ⑯ USB 2.0 接口 |
| ⑥ 返回/退出键 | ⑰ USB Audio输入 |
| ⑦ 遥控接收窗 | ⑱ 光纤输出 |
| ⑧ 6.3mm耳机接口 | ⑲ 同轴输出 |
| ⑨ 多功能旋钮 | ⑳ I²S输出接口 |
| ⑩ 2.4G/5G双频天线 | ㉑ micro SD卡槽 |
| ⑪ AES/EBU输出 | |

*任何界面任何状态下长按10秒以上, 强制关机

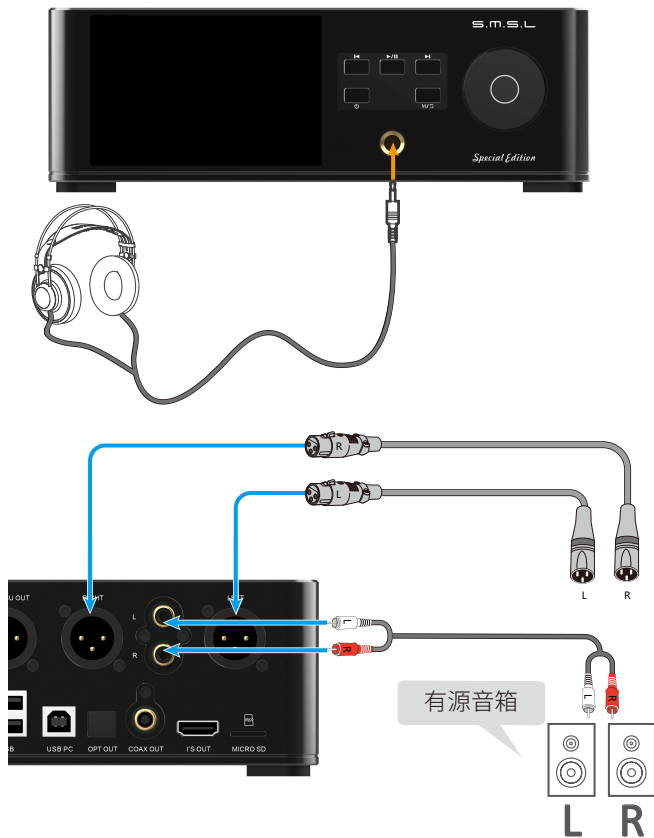
**短按, 在当前歌曲播放时间超过10秒, 按“上一曲键” 播放重新开始播放当前歌曲, 未超过10秒, 播放上一曲。

操作方法:

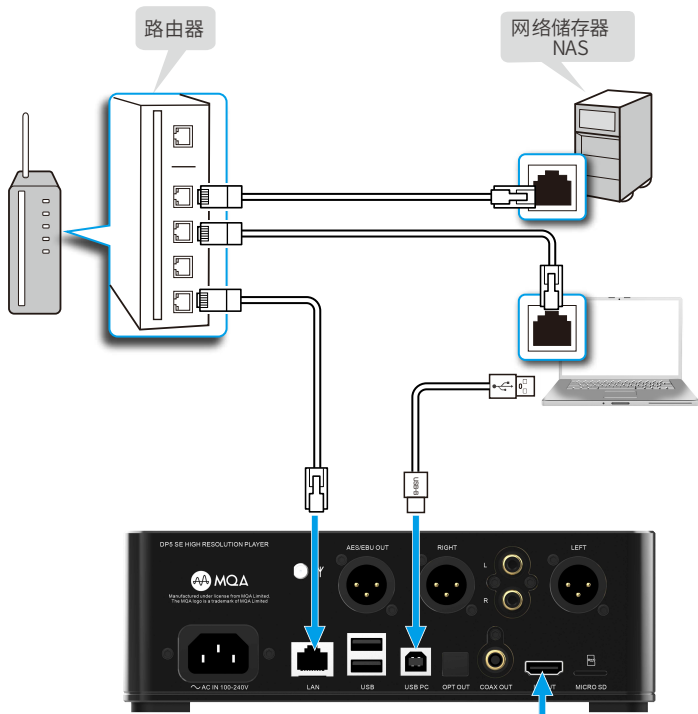
- 多功能旋钮: 在播放界面下, 左右旋转为音量加减, 短按中间键暂停, 长按为进入播放模式菜单; 在菜单界面下, 左右旋转为上下选择, 短按为确认。
- 播放/暂停按键: 单击为播放/暂停, 双击为当前曲目重新播放。
- 旋钮中心指示灯: 关机时红色、开机时蓝色、开关机过程绿色。
(多功能旋钮中心按键与遥控器确认键功能相同, 返回键与遥控器返回键功能相同。)

连接示意图

注：输出接口可以连接功放，耳放，有源音箱等



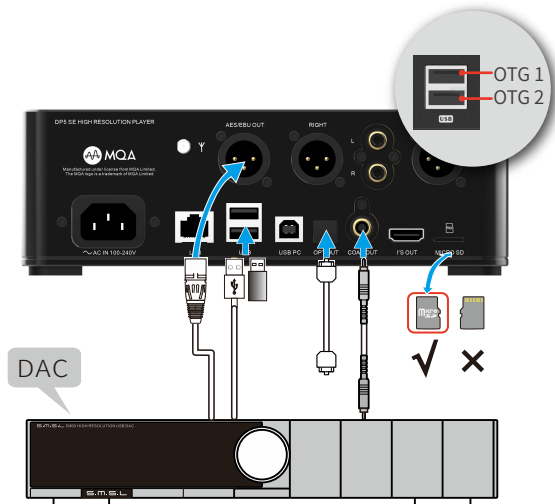
连接示意图



I2S 接口引脚定义



连接示意图



■ 两个USB A接口使用说明：

1. 用作USB硬盘输入时，上接口为OTG_1，下接口为OTG_2。

注意：两个 USB 输出电流总和不超过2A。

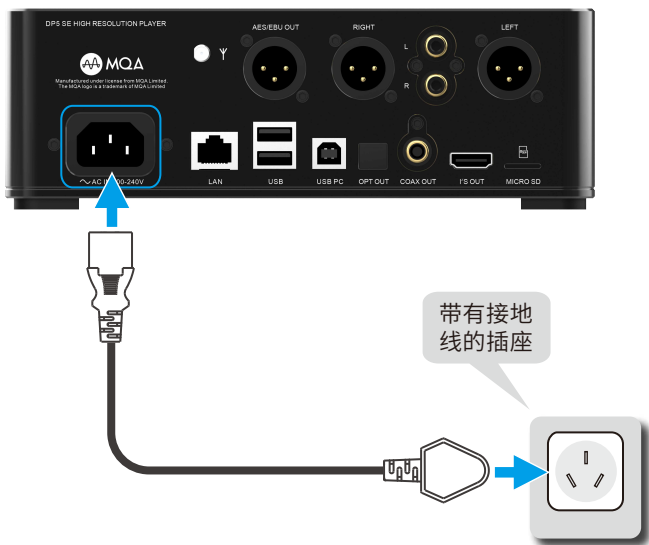
2. 其中1个用作USB输出，连接USB DAC时，显示“音频设备连接”，同时从这个USB接口输出数字信号，DP5 SE的其它输出无声。拔出时，显示“音频设备断开”，恢复原来输出。

注意：可能由于USB匹配问题，USB DAC不能连接成功

音频设备连接

音频设备断开

遥控/电源输入



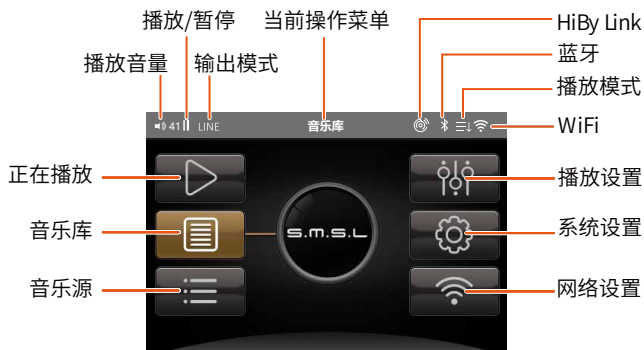
注意：请使用带接地线良好的电源插座，以确保安全及避免噪声。

DP5 SE的电源状态是具备记忆功能的。

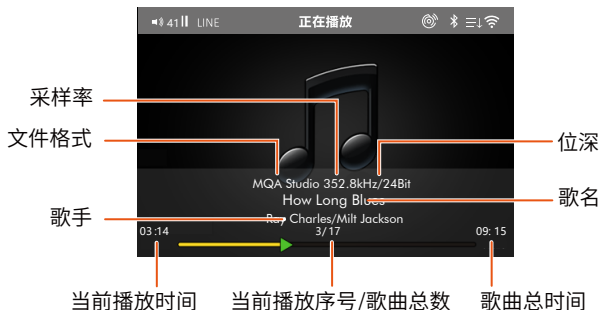
- 不使用按键关机，直接拔掉电源线，下次插电会直接开机；
- 长按旋钮/遥控关机后，下次插电不会直接开机。

界面介绍

1.主界面



2.播放界面



界面介绍

部分操作说明：

“多功能旋钮”：

- 1.在播放界面下短按中间键为播放/暂停，长按为正在播放内部菜单。
(我的最爱、添加到歌单、删除、列表播放模式) 在菜单下短按为确定。
- 2.在播放界面下左/右旋转为减/加音量，在菜单下左/右旋转为切换内容。
- 3.播放/暂停键：单击为播放/暂停；双击为重新播放。

(注：在其它菜单下“播放/暂停键”功能仍然有效。)

3.音乐库界面



音乐库菜单的内容为：

- 最近播放
- 全部歌曲
- 我的最爱
- 专辑分类
- 风格分类
- 表演者分类
- 歌单

部分操作说明：

“多功能旋钮”：

- 在音乐库菜单进入“歌单”内，长按任意一个歌单可选择删除歌单。
- 请注意：DP5 SE歌曲扫描最大数量是3万首，超出之后不会扫描。

(注：遥控器“确认键”与机器“多功能旋钮中间键”的长按操作相同。)

界面介绍

4. 音乐源界面



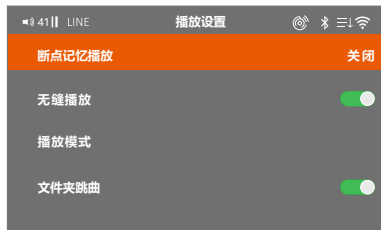
音乐源菜单的内容为：

1. micro SD卡
2. 局域网
3. OTG-1
4. OTG-2
5. USB-DAC
6. DLNA
7. AirPlay
8. 蓝牙

部分操作说明：

“多功能旋钮”：长按可对选中的文件进行删除。

5. 播放设置界面



播放设置菜单的内容部分操作说明：

1. 断点记忆播放：

“关闭”下一次开机不会播放上一次关机前的曲目。
“曲目”下一次开机自动显示上一次关机前的曲目。
“位置”下一次开机自动跳到上一次关机前曲目播放位置。

2. 无缝播放：同采样率的歌曲切换没有停顿。
3. 播放模式：1、列表播放 2、单曲循环 3、随机播放 4、列表循环。
4. 文件夹跳曲：切换歌曲是可跳转到不同文件内的歌曲。

(注：播放设置仅对micro SD卡有效。)

界面介绍

6.系统设置界面



系统设置菜单的内容部分操作说明：

1.更新音乐库模式：

- 手动。
- 自动。

(注：此功能仅对micro SD卡有效。)

2.更新音乐库：点击开始扫描连接到机器上所有内存设备的歌曲。

3.输出模式：

- 耳机输出
 - 线路输出
- (数字输出不受影响)

4.I²S inverting

I²S反相选择或者不选择

5.固定采样率输出

打开或者关闭

- 44100
- 48000
- 88200
- 96000
- 176400
- 192000

6.DSD输出模式：

- D2P(DSD to PCM)：将DSD信号转换成PCM信号输出。
- DoP(DSD over PCM)：将DSD信号封装成PCM编码，达到传输DSD信号的目的(光纤,同轴,AES传输DOP信号只支持DSD64)。
- DSD Native：直接DSD数据传输，以1 bit 2.822MHz或其倍数传输DSD编码的数字信号。

界面介绍

7.USB B口模式:

B型 USB接口设为“USB模式”，机器通过B型USB接口连接电脑，对机器 micro SD卡数据进行访问与修改，断开连接前请先按“退出”键弹出。



B型USB接口设为“DAC模式”，机器的B型USB接口为USB Audio输入接口,机器作为普通USB解码设备使用,在此模式下,USB数字音频输出关闭。



8. 背光亮度:亮度调节分5个级。

9. 熄屏时间:可选择15秒、30秒、45秒、3分钟、5分钟、10分钟、从不。

10. 语言选择:简体中文、繁體中文、English。

11.关于产品:

型号 外置内存 可用容量 蓝牙地址 固件版本

12.恢复出厂设定:重置机器所有选项设定,恢复到出厂设定。

13.系统升级:把升级固件下载到micro SD卡内,插入机器点击系统升级。

界面介绍

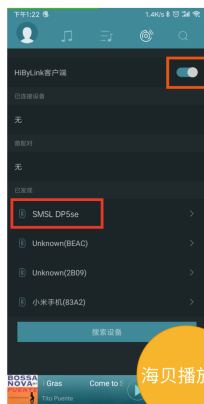
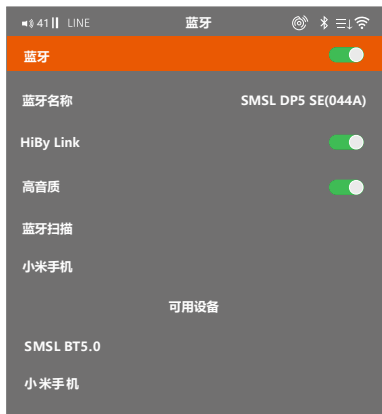
7.网络设置界面



海贝播放器APP安卓下载:



网络设置菜单的内容部分操作说明:



1. Bluetooth

1.1、HiBy Link: 在移动设备打开**海贝播放器**里面的HiBy Link功能与DP5 SE 对接, 移动设备可浏览机器内的储存设备, 可作为蓝牙遥控器使用。

(注: 使用蓝牙输入音频时, 务必关掉DP5 SE机器的HiBy Link。)

界面介绍

- 1.2、高音质:使用高级算法,使得蓝牙传输音质得以提高。
- 1.3、蓝牙扫描:扫描附近能连接蓝牙的设备,可选择连接设备。
选中已连接过的设备,可长按“多功能中间键”来删除配对。

2.WiFi:选择“WiFi搜索”,扫描附近的无线局域网,



通过遥控器或者多功能旋钮在虚拟键盘输入密码(如下图,最后选择“OK”),进行配对连接至显示“已连接”(如上图)。



界面介绍

SAMBA(NAS)局域网播放:

WiFi设置完毕后,在“文件浏览”菜单下,进入局域网选择相应文件夹,读取歌曲进行播放。(如文件夹设置了密码保护,请先取消)

(注:切换不同网络后,需重新搜索服务器刷新文件,由于WiFi网络不稳定或者受干扰,在播放时可能出现断续,甚至中断)

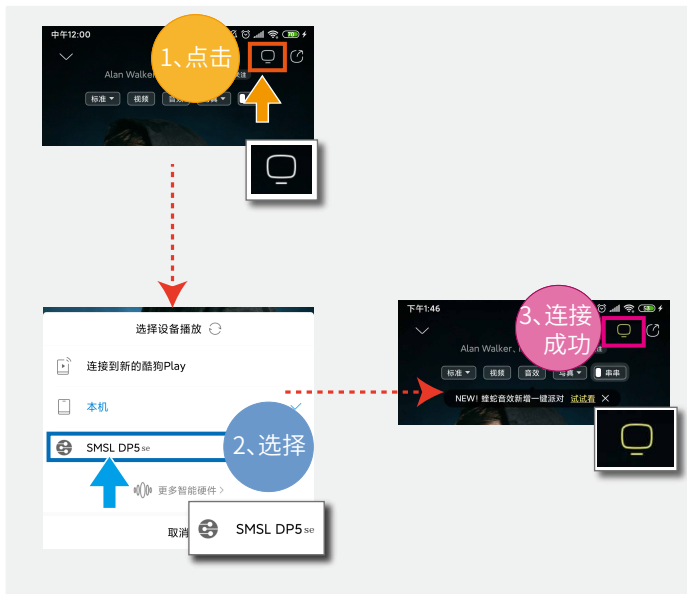


3.DLNA:DP5 SE连接网络,移动设备安装并打开酷狗音乐,播放歌曲,在播放版面左上角点☐,选择推送到“SMSL DP5 SE”上播放。

(注:只能在同一个网络下进行操作,由于网络可能存在不稳定,会引致DLNA播放中断。若WiFi网络有5G频段,请选择5G,干扰更少更稳定)

界面介绍

3.1 DLNA连接示意图



4. 苹果隔空播放 (AirPlay) 功能: 只要连接到同一局域网, DP5 SE 会自动出现在苹果设备 iPhone、iPod、iTouch、iPad 或 iTunes 的隔空播放设备列表中, 只需点击该设备, 即可将苹果设备上的音频投送到 DP5 SE 中播放。

请注意: 任何蓝牙、WiFi 等无线连接, 可能会因距离太远或受到其它无线电波干扰, 而导致连接不成功, 或者传输信号丢失、甚至中断。部分安卓移动设备, 可能存在蓝牙不完全兼容的情况, 而导致不能正常播放。

关于MQA

MQA (Master Quality Authenticated) 是一项屡获殊荣的英国技术，是一种兼有极高的采样率和足够小的文件体积的高解析音频编码技术。DP5 SE采用MQA技术，可以接收并解码MQA音频，提供母带级别的声音。

有关更多信息，请访问<https://www.mqa.co.uk/how-it-works>

MQA文件播放

- DP5 SE的MQA播放不要求使用特殊的播放软件,例如foobar2000,Audirvanaplus只要支持ASIO或者WASAPI的音频输出就可以了,并且在播放MQA音频时,最好将电脑的音量调到最大,以使得电脑的音频输出是最佳状态。
- 在播放MQA文件时,显示屏显示的采样率为音频原始采样率。
- MQA文件有MQA、MQA Studio这两种文件格式。

产品配件

序号	名称	单位	用量	备注
1	机器	台	1	
2	遥控器	个	1	
3	电源线	条	1	
4	USB数据线	条	1	
5	天线	条	1	
6	说明书	本	1	
7	保修卡	张	1	
8	包装盒	套	1	

警告

听力专家建议不要持续大声播放,如果你感到耳朵不适,请降低音量或停止使用。

保修条款

一、服务期限

佛山双木三林科技有限公司承诺产品的良好品质，产品自售出之后7天内正常使用情况下出现故障，客户可以选择退货或者保修(不影响二次销售才可退货。正常使用一年内出现故障可以免费保修。

二、购买日期以销售商开出的购机发票或收据日期为准，网购可以交易截图为准。

三、有以下情况都不能享受“三包”服务

- 一切人为因素损坏,包括非正常工作环境下使用或不按照说明书使用;
- 用户私自拆机、改装、维修;
- 使用非指定或许可的配件造成损坏的;
- 机身的QC或保修贴损毁;
- 不能出示有效购机凭证;
- 不属于本公司产品。

四、保修方式为送修

此条款只适于中国大陆,其它地区请参考当地销售代理商的规定和国家法规。

S.M.S.L

Safety Notes



CAUTION
RISK OF ELECTRIC SHOCK
DO NOT OPEN



CAUTION:

TO REDUCE THE RISK OF ELECTRIC SHOCK, DO NOT REMOVE COVER (OR BACK)



The lightning flash with arrowhead symbol, within an equilateral triangle, is intended to alert the user to the presence of uninsulated “dangerous voltage” within the product’s enclosure that may be of sufficient magnitude to constitute a risk of electric shock to persons.



The exclamation point within an equilateral triangle is intended to alert the user to the presence of important operating and maintenance (servicing) instructions in the literature accompanying the appliance.



Safe use only under elevation 2000m.

Important note:

The product specifications and information mentioned in this manual are for reference only. The content of this manual is subject to change without notice.

WARNING: TO REDUCE THE RISK OF FIRE OR ELECTRIC SHOCK, DO NOT EXPOSE THIS APPLIANCE TO RAIN OR MOISTURE.

Feature

- Supports audio format of DSD , WAV , APE , FLAC , AIFF , MP3 Etc.
- Fully supports MQA decoding including local playback and USB DAC.
- Several output options: USB , coaxial , I²S , AES/EBU , Single-ended analog, balanced analog, headphone 6.35mm.
- ES9039Q2M D/A Chip, Ultra-high dynamic range of 126dB, Ultra-low THD+N(0.00009%).
- DOP and D2P output supported by SPDIF.
- 3.5" large size full view IPS LCD.
- Newly designed UI for better Intuitive operation.
- Supports wired and Wifi connection.Wifi format of 2.4GHz and 5GHz.
- Supports streaming playback of DLNA and Airplay.
- Bluetooth with transmitting and receiving function and supports APTX format.
- External hard-Disk connected by USB supports up to 4TB capacity ,and supports NTFS/FAT32 format.
- With USB DAC function which can play music from computer by USB jack.
- Built-in high-efficiency and low-noise switching mode power supply.
- With earphone monitoring function.

Note:

<http://www.smsl-audio.com>

Specifications

- Input mode: micro SD / SAMBA(NAS) / OTG1 / OTG2
USB-DAC / DLNA / AirPlay / Bluetooth
- Output mode: RCA / XLR / headphone
COAXIAL / OPTICAL / AES/EBU / I²S
BT / USB audio
- THD+N: 0.00009%
- Dynamic range: 126dB (A-Weighted)
- SNR: 126dB (A-Weighted)
- Headphone output power: 89mW(32Ω)
64mW(64Ω)
27mW(150Ω)
14mW(300Ω)
- Unbalanced line output level: 2.1Vrms
- Balanced line output level: 5.2Vrms
- USB Audio: DSD Top support DSD256
- PCM Top support PCM384kHz
- USB Audio System compatibility: windows 7/8/8.1/10/11;Mac OS X;Linux

Specifications are subject to change without notice.

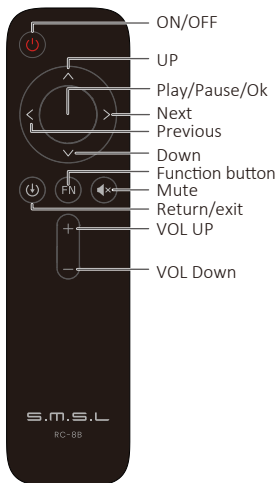
- File system: Support FAT/FAT32/NTFS
- micro SD Capacity of card: Top support 256G
- USB drive/Hard disk: Top support 4T
- USB Maximum output current: 2A(The sum of two USB output currents)
- USB A maximum output current: 2A
- USB DAC output: Support
- Bluetooth version: 4.0 Edition
- APT-X Support
- BlueInput: Support
- Bluetooth output: Support
- HiBy Link: Support
- WIFI function: Support
- WIFI Specifications: Support 2.4G/5G
- Mesh size: 100Mb/s
- File browsing: Support
- System language: Simplified Chinese、 Traditional Chinese、 English
- Software upgrade: Support
- Power consumption: 5W
- Standby: 0.5W

Specifications are subject to change without notice.

Format	Support	Level	Sampling rate*		Bit width		Remarks
			Min	Max			
APE**	√	Fast	8K	384K	16-24bit		CUE
	√	Normal	8K	384K	16-24bit	√	
	√	High	8K	384K	16-24bit	√	
	√	Extra high	8K	96K	16-24bit		
	×	Insane	8K				176/192K Nonsupport
WAV	√		8K	384K	16-32bit		
WMA	√		8K	96K	16-24bit	√	DIS not support
WMA Lossless	√		8K	96K	16-24bit		
Flac	√		8K	384K	16-24bit		
DSF	√		2.8M	11.2M	1bit	√	
DFF	√		2.8M	11.2M	1bit		
ISO DSD	×						
ISO DST	×						
Aiff	√		8K	384K	16-32bit		
M4A	√		8K	384K	16-24bit		
Mp2	√		8K	48K	16bit		
Mp3	√		8K	48K	16bit		
AAC	√		8K	48K	16bit	√	
OGG	√		8K	48K	16bit		

Note:

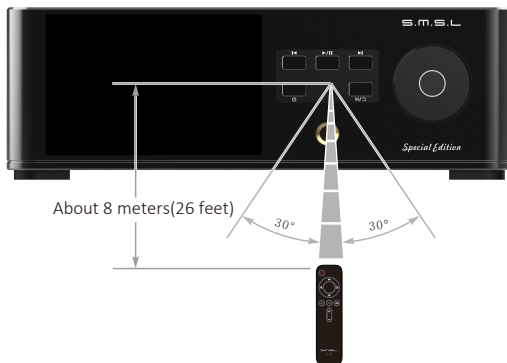
- * The mark here is the rate of sampling is not a file rate.
- ** Ape : 32-192kHz's Insane file does not support.
176.4kHz, 192kHz's Extra high file does not support.
- *** ISO8 files do not support.
- **** ALL 64k files do not support.

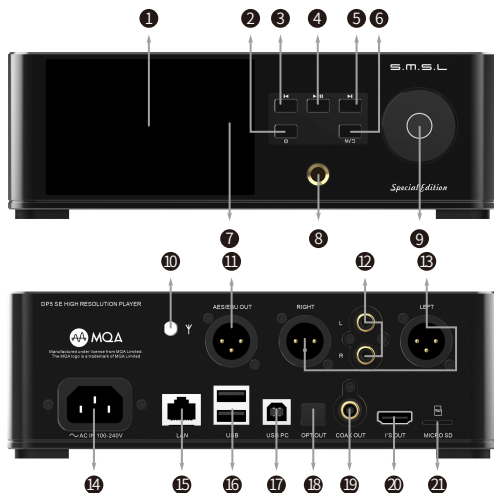


Note

1. In any interface during music playback, long press the function key to return to the "Playing" interface.
2. In any interface, long press the return key to return to the home page.

Use range of remote control





- | | |
|---|------------------------|
| ① Display screen | ⑪ AES/EBU output |
| ② Power button, long press ON / OFF, short press turn off display.* | ⑫ Line output |
| ③ "Previous" button, short press the previous song, long press to rewind.** | ⑬ Balance output |
| ④ Play / pause | ⑭ Power AC input |
| ⑤ "Next" button, short press next song, long press fast forward | ⑮ Network interface |
| ⑥ Return / exit | ⑯ USB 2.0 interface |
| ⑦ remote IR window | ⑰ USB Audio input |
| ⑧ Unbalance headset 6.3mm interface | ⑱ Optical output |
| ⑨ Knob | ⑲ Coaxial output |
| ⑩ 2.4G/5G dual frequency antenna | ⑳ I2S output interface |
| | ㉑ Micro SD card slot |

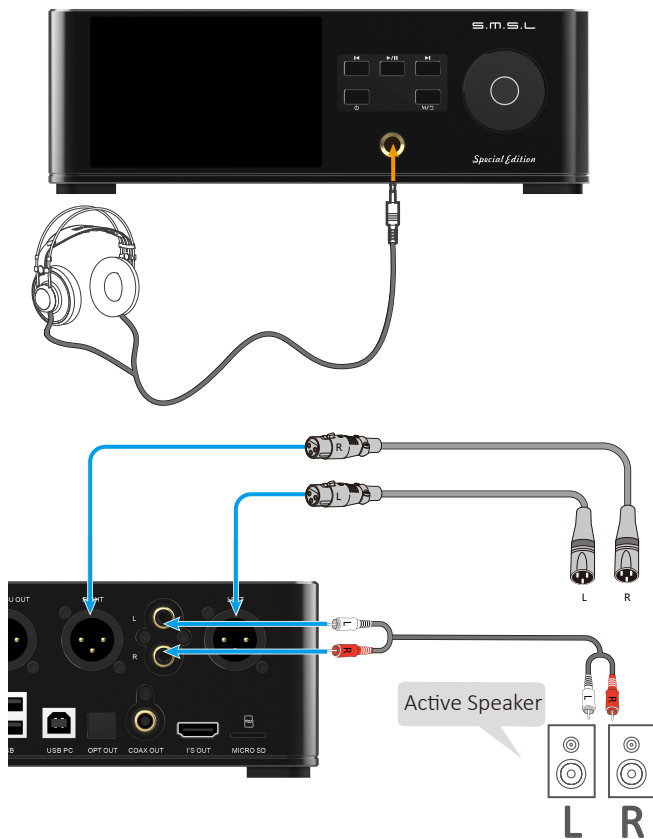
- * Long press for more than 10 seconds in any interface and state to force shutdown.
- ** Short press, when the current song playing time exceeds 10 seconds, press "Previous Song" to restart playback of the current song. If it does not exceed 10 seconds, play the previous song.

Operation method:

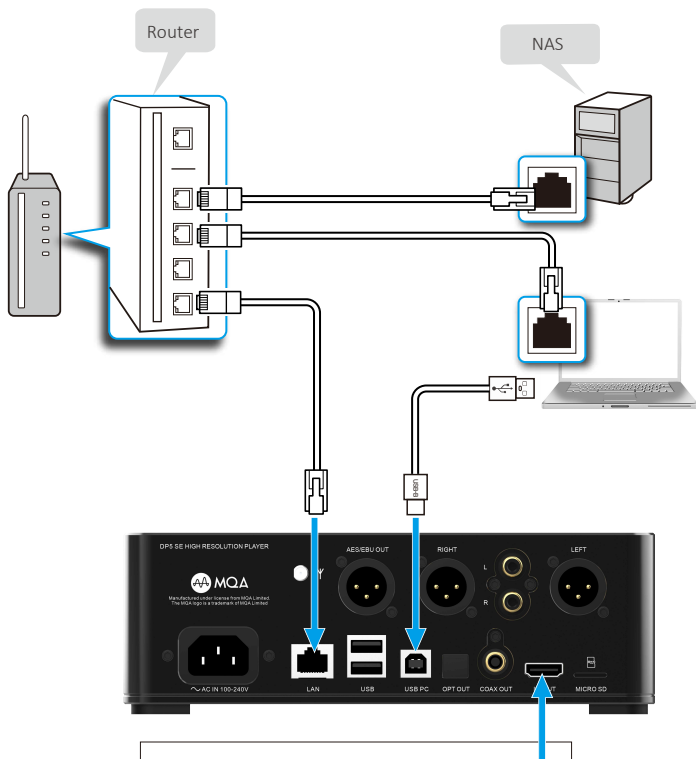
1. Multifunction knob: In the playback interface, turn left or right is the volume up or down, short press middle button pause, long press to enter the playback mode menu. Under the menu, rotate left and right to select up and down, short press to confirm.
2. Play/pause button: click to play or pause, double click to repeat current track.
3. Knob center indicator: red when off, blue when turned on, green when on/off.
(The multi-function knob center button has the same function as the remote control confirmation key, and the return key has the same function as the remote control return key.)

Connecting your equipment

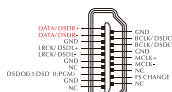
Connect headphone and active speakers.



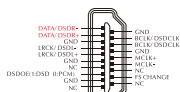
Connecting your equipment



I2S Pins Functions

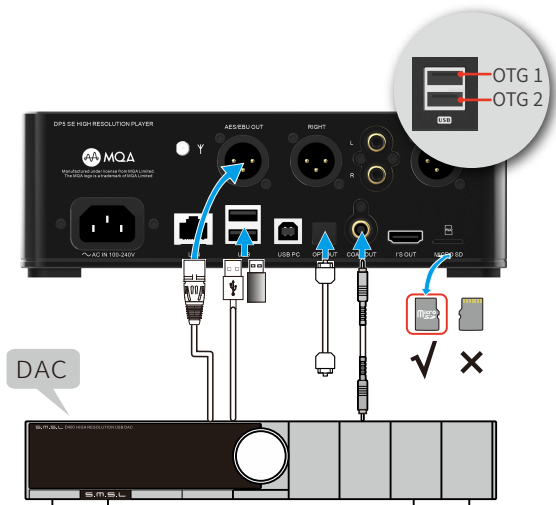


I2S NORMAL
(Figure 1)



I2S INVERTED
(Figure 2)

Connecting your equipment

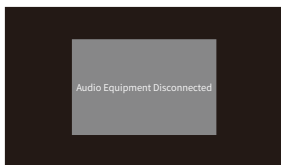
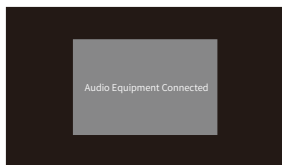


Instructions for the two USB A ports: 1. When used as a USB hard disk input, the upper interface is OTG_1 and the lower interface is OTG_2.

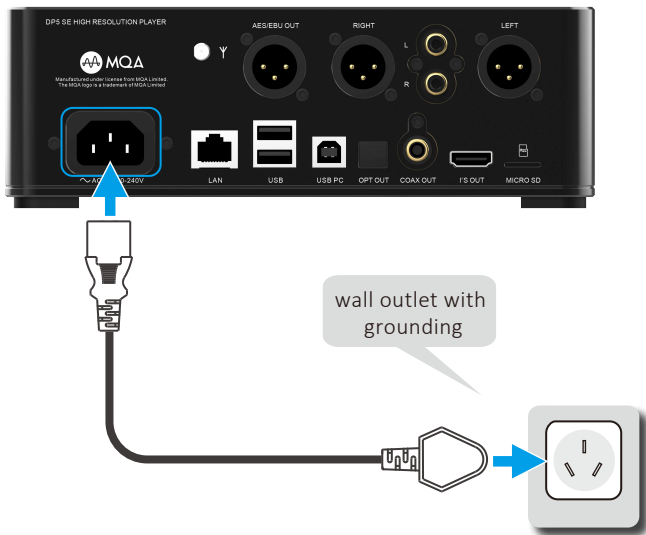
Note: The sum of the two USB output currents does not exceed 2A.

One of them is used as a USB output. When the USB DAC is connected, the “Audio Device Connection” is displayed, and at the same time, the digital signal is output from this USB interface, and the other output of the DP5 SE are silent. When unplugged, “Audio Device Disconnect” is displayed, and the original output is restored.

Note: The USB DAC cannot be successfully connected due to USB matching problems.



Connecting your equipment



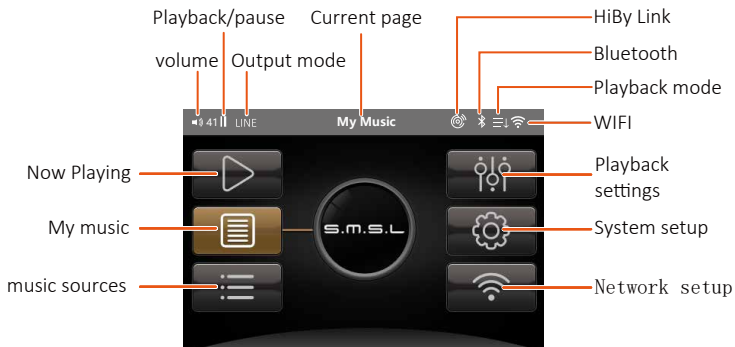
Note: Please use a power outlet with a good grounding wire to ensure safety and avoid noise.

The power state of DP5 SE has memory

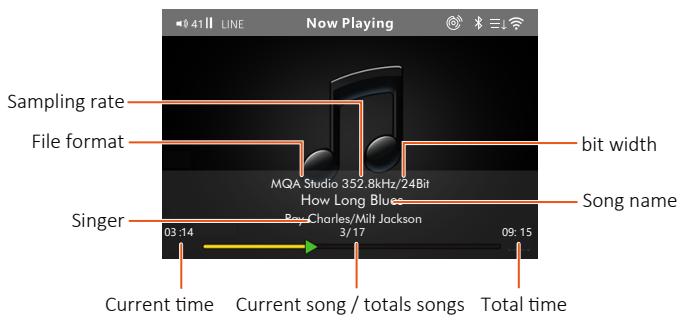
- Without use the button to shut down, directly unplug the power ord, the next plug will directly boot;
- Hold the knob/remote control power off, the next plug-in will not directly start.

Display

1.Main interface



2.Playback interface



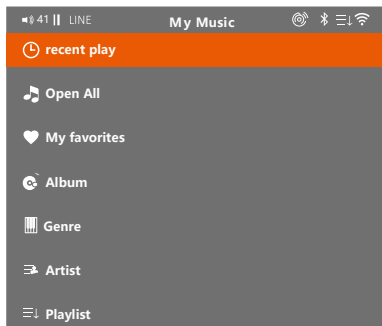
Display

Operation method:

"Multifunction knob":

1. In the playback interface, short press to play or pause, pressing and hold button goes into playback menu.(My favorites, add to song list, delete, list play mode) Short press under the menu to confirm.
2. Turn this knob left or right to turn volume up or down.
3. Play / pause button: click to play or pause; double click to replay current track.
(Note: the "playback / pause key" function is still valid under other menus.)

3. Music library



The content of the music library menu is:

- Recent play
- Open all
- My favorites
- Album
- Genre
- Artist
- Song sheet

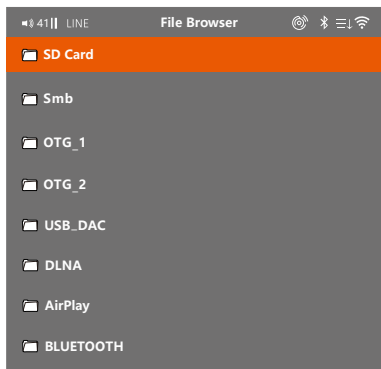
Operation:

- "Multifunction knob": In playlists, long press knob to delete a song.
- Please pay attention: The maximum number of DP5 SE song scans is 30,000, and it will not be scanned after exceeding.

(Note: the "function key" of the remote control is the same as the machine "multifunction knob".)

Display

4. File browsing interface



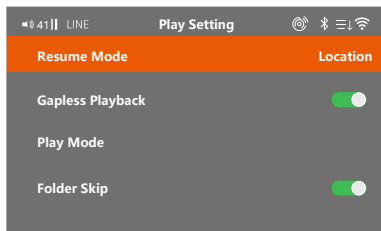
The contents of the file browsing menu are:

1. Micro SD card .
2. LAN.
3. OTG-1.
4. OTG-2.
5. USB-DAC.
6. DLNA
7. AirPlay
8. Bluetooth

Operation:

"Multifunction knob":
long press to Delete files .

5. Playback menu



The content of playback menu:

1. Resume Mode:
 - 1.1 "Turn off "next time The last shutdown will not be played The previous repertoire.
 - 1.2 "Repertoire" Memory the track before power off.
 - 1.3 "Position"Memory the position of the track before power off.

2. Gapless playback: Song switching with the same sampling rate does not stop.

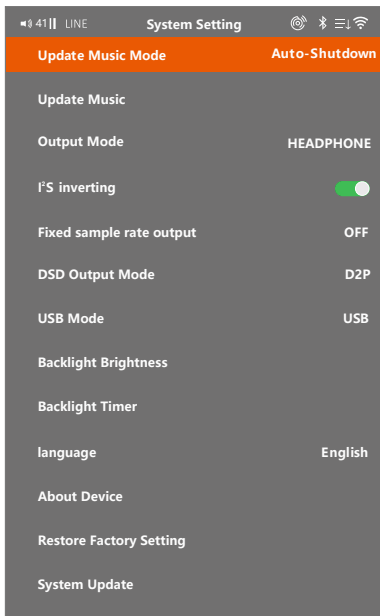
3. Play mode: list play, single loop, random play, list cycle.

4. Folder skip: Switching songs is a song that can be jumped to a different file.

(Note: The playback settings are only valid for micro SD cards.)

Display

6. System setting



The content of the system settings menu:

1. Update music mode:

- Manual.
- Auto.

(Note: This function only valid by using micro SD card.)

2. Update music: Click start scan memory devices connected to DP5 SE.

3. Output mode:

- headphone output
 - Line output.
- (Digital output is not affected)

4. I²S inverting

Choose or not choose

5. Fixed sample rate output, on or off

- 44100
- 48000
- 88200
- 96000
- 176400
- 192000

6. DSD output mode:

- D2P (DSD to PCM): Converts the DSD signal to a PCM signal output.
- DoP (DSD over PCM): The DSD signal is encapsulated into PCM code for the purpose of transmitting DSD signals (fiber, coaxial, AES transmission DOP signal only supports DSD64).
- DSD Native: Direct DSD data transmission, transmitting DSD encoded digital signals in 1 bit 2.822MHz or multiples thereof.

Display

7. B-type USB mode:

The B-type USB interface is set to "USB mode". The unit is connected to the computer through the B-type USB interface to access and modify the micro SD card data of the machine. Please pop up before disconnecting.



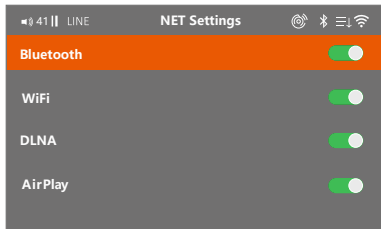
The B-type USB interface is set to "DAC mode", the B-type USB interface of the unit is the USB Audio input interface, and the machine is used as a normal USB decoding device.



8. Backlight brightness: brightness adjustment is divided into 5 levels.
9. Backlight time: 15 seconds, 30 seconds, 45 seconds, 3 minutes, 5 minutes, 10minutes, never.
10. Language: simplified Chinese, Traditional Chinese, English.
11. About device: Model External memory Available capacity
Bluetooth address Firmware version
12. Restore the factory setting: reset all options set to the machine, restore to the factory setting.
13. System upgrade: Download the upgrade firmware to the micro SD card, insert the unit and click the system upgrade.

Display

7. Network setting interface

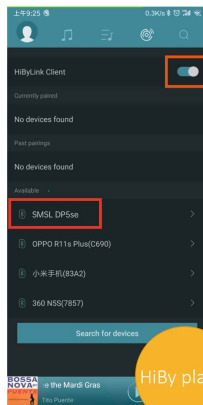
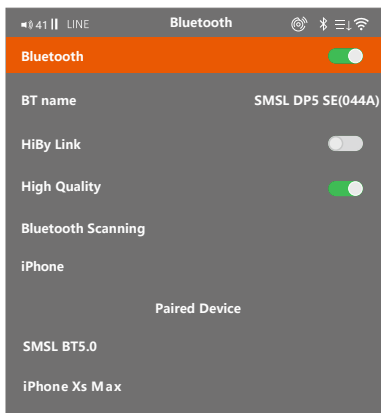


Hiby APP android download:



(Google play)

Operating instructions in the content section of the Network Settings menu:



1. Bluetooth

1.1、HiBy Link: The HiBy Link function in the mobile device opens the HiBy player and docks with DP5 SE. The mobile device can browse the storage device in the unit and can be used as a Bluetooth remote controller.

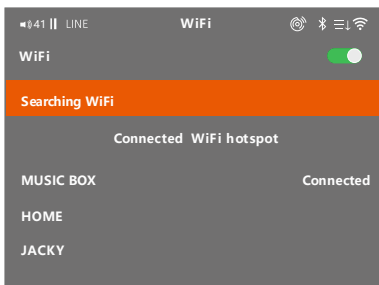
(Note: When using Bluetooth to input audio, be sure to turn off the HiBy Link of the DP5 SE.)

Display

1.2、High sound quality: Using advanced algorithms, the sound quality of Bluetooth transmission is improved.

1.3、Bluetooth scanning: Scan nearby devices that can connect to Bluetooth, you can choose to connect devices. Select the connected device and press and hold the "Multi-Function Middle Button" to delete the pairing.

2.WiFi: Select "searching Wifi" to scan nearby wireless LAN



Use the remote control or multi-function knob to enter the password on the virtual keyboard (as shown below, and finally select "OK") to make a paired connection. Show "connected" (as shown above).



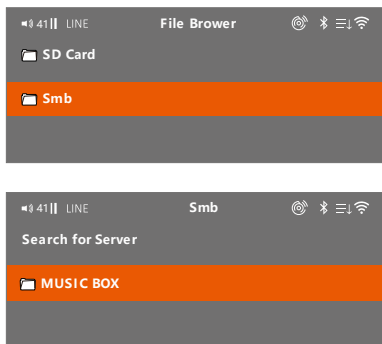
Display

SAMBA (NAS) LAN playback:

After the WiFi setting is completed, under the “File Browser” menu, enter the LAN to select the corresponding folder, and read the song for playback.

(If the folder is password protected, please cancel it first)

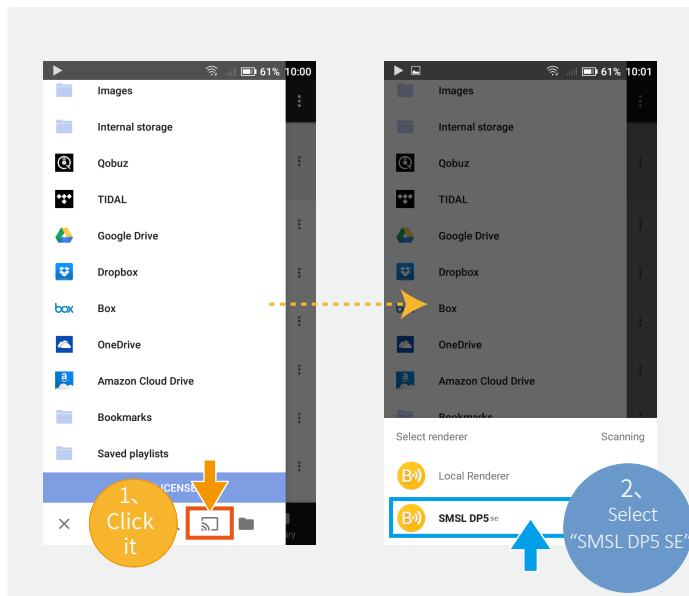
(Note: After switching to different networks, you need to research the server to refresh the file. As the WiFi network is unstable or interfered, it may appear intermittent or even interrupted during playback.)



3. DLNA: DP5 SE connects to the network, the mobile device installs and opens “Bubble UPnP”, plays the song, pull the playback layout to the right, and selects to push to play on “SMSL DP5 SE”.

(Note: You can only operate on the same network. As the network maybe unstable, it will cause DLNA playback to be interrupted.)

Display



4.AirPlay: As long as the DP5 SE is connected to the same local area network with your iOS device (iPhone, iPod, iTouch, iPad or iTunes), it will appear in the AirPlay device list. You can simply send the audio stream to DP5 SE by selecting it.

Please note: Any wireless connection such as Bluetooth or WiFi may be lost or even interrupted due to too far distance or other radio waves. Some Android mobile devices may not be fully compatible with Bluetooth, which

About MQA

MQA (Master Quality Authenticated) is an award-winning British technology that delivers the sound of the original master recording. The master MQA file is fully authenticated and is small enough to stream or download. The DP5 SE includes MQA technology, which enables you to playback MQA audio files and streams, delivering the sound of the original master recording.

Visit How it works <https://www.mqa.co.uk/how-it-works> for more information.

MQA files playback

- DP5 SE's MQA playback does not require additional software. You can use foobar2000 or Audirvana for MQA playback as it supports ASIO or WASAPI audio output. When playing MQA audio, it is suggested to adjust the volume of the computer to the maximum for the best audio output.
- When playing an MQA file, the sampling rate of the original master recording is displayed.
- MQA files have two file formats: 'MQA' and 'MQA Studio'.
- 'MQA' or 'MQA Studio' indicates that the product is decoding and playing an MQA stream or file, and denotes provenance to ensure that the sound is identical to that of the source material. "MQA Studio" indicates it is playing an MQA Studio file, which has either been approved in the studio by the artist/producer or has been verified by the copyright owner.

Accessories

- DP5 SE*1
- remote control (1)
- power cord (1)
- USB data line (1)
- antenna (1)
- Instructions (1)
- warranty card (1)
- packing box (1)

Notice

Listening experts advise not to continue to play loud, if you feel discomfort, please reduce the volume or stop using it.

Warranty terms

1.The Term of Service

Foshan Shuangmusanlin Technology Co., Ltd promises to offer good-quality products. If the product is broken in 7 days after purchasing when you use it normally, you can choose to send it back for return, replacement or repairing (only the product does not affect the second sales can be returned). Repairing for free in one year if you use it normally.

2.Date of purchase is in accordance with the date on invoice or receipt issued by seller, and if you buy it online, you can show the screenshot of trade.

3.If an inappropriate usage causes the unit damaged, the warranty will be void. As below.

a.All damages by inappropriate use, including using it under non-normal working environment or without following the instructions.

b.Dismantling, refitting, repairing by user in private.

c.Causing damage by using some fittings instead of the designative or accredited ones.

d.Cannot provide credible proof of purchase.

e.Products not from S.M.S.L(e.g. counterfeits).

4.Sending it back to our company for repairing.

5.Contact your S.M.S.L Audio reseller for a Return or replacement.