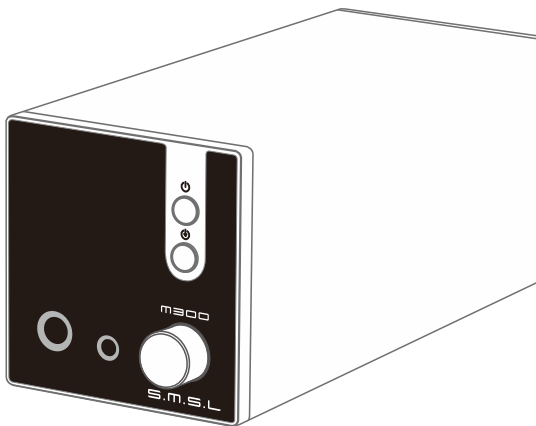


S.M.S.L



M300 SE

USER MANUAL



Safety Notes

- Install this unit in a well ventilated, cool, dry, clean place-away from direct sunlight, heat sources, vibration, dust, moisture, or cold..
- Use the voltage specified on this unit Only. Using this unit with a higher voltage than specified is dangerous and may cause fire , damage to this unit, or personal injury. Our company will not be held responsible for any damage resulting from the use of this unit with a voltage other than that specified.
- Do not attempt to modify or fix this unit by yourself. Contact alesperson or customer service when any service is needed. The cabinet should never be opened for any reason.
- When not planning to use this unit for long periods of time (i.e. when going on vacation), disconnect the power cable from the AC wall outlet.

Important note:

The product specifications and information mentioned in this manual are for reference only. The content of this manual is subject to change without notice.

Warranty Terms

1.The Term of Service

Foshan Shuangmusanlin Technology Co., Ltd promises to offer good-quality products. If the product is broken in 7 days after purchasing when you use it normally, you can choose to send it back for return, replacement or repairing (only the product does not affect the second sales can be returned). Repairing for free in one year if you use it normally.

2.Date of purchase is in accordance with the date on invoice or receipt used by seller, and if you buy it on line, you can show the screenshot of trade.

3.If an inappropriate usage causes the unit damaged, the warranty will be void. As below.

- All damages by inappropriate use, including using it under non-normal working environment or without following the instructions.
- Dismantling, refitting, repairing by user in private.
- Causing damage by using some fittings instead of the designative or accredited ones.
- Cannot provide credible proof of purchase.

4.Sending it back to our company for repairing.

5.Contact your S.M.S.L Audio reseller for a return or replacement.

Features

- Support MQA full decoding, support MQA-CD;
- A new series of exterior design with tempered glass panel, both high-end feeling and durable!
- Cirrus Logic's latest audio decoder chip CS43131, with carefully designed circuitry, achieves an unprecedented 0.00013% (-117dB) distortion performance!
- The new third generation XMOS XU-316, PCM support up to 32bit /768kHz, DSD support up to DSD256.
- Bluetooth 5.0 digital audio input, external antenna, farther transmission distance.
- The clock system uses independent ultra-low clock jitter, ultra-low phase noise for the audio clock.
- Built-in high-efficiency power supply chip for the decoder to provide sufficient energy, and the use of multiple groups of low-noise LDO power supply.
- The use of a large number of audio-specific audiophile resistors and capacitors.
- The use of 1.29 "OLED display.
- Fully balanced design, and has a true balanced output.
- With 6.35mm, 4.4mm balanced headphone output.
- Equipped with full-featured remote control and preamp function.
- All aluminum CNC precision machining chassis to effectively reduce the thousand disturbances.



Specifications

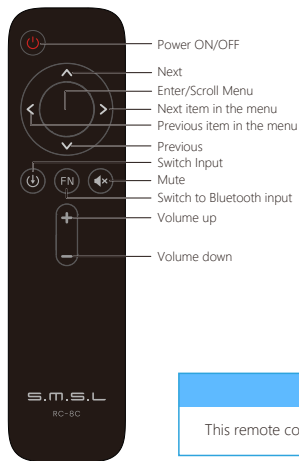
Inputs	USB / Optical / Coaxial / Bluetooth		
Output Level.....	RCA	2.0Vrms	
	XLR	4.0Vrms	
THD+N(UN-WTD).....	0.00013% (-117dB)		
Dynamic range (UN-WTD).....	RCA	120dB	
	XLR	132dB	
SNR (UN-WTD).....	131dB		
Bluetooth	BT 5.0 (support SBC)		
USB transmission	Asynchronous		
USB compatibility	Windows 7 / 8 / 8.1 / 10		
	Mac OS X10.6 or Later / Linux		
Bit depth.....	USB	1bit, 16~32bit	
	Coaxial , Optical	1bit, 16~24bit	
Sampling rate	USB	PCM	44.1~768kHz
		DSD	2.8224~11.2896MHz
	Coaxial , Optical	PCM	44.1~192kHz
		DSD	DSD64(DoP)
Power Consumption	3W		
Standby power	< 0.1W		
Size	70x73x165mm (WxHxD)		
Weight	0.54Kg		

SMSL reserves the right to make improvements which may result in specification or feature changes without notice.

Remote control

- Install 2 x AAA batteries as instructions.
- When using the remote control, point it toward the remote control signal receiver on the main unit from a distance of 5 m (16 ft) or less. Do not place obstructions between the main unit and the remote control.
- The remote control might not work if the remote control signal receiver on the unit is exposed to direct sunlight or bright light. If this occurs, try moving the unit. Beware that use of this remote control could cause the unintentional operation of other devices that can be controlled by infra.

Operating the remote control



Note

This remote controller use 2 x R03/AAA batteries.

Display Interface and Instructions



- | | | |
|---------------------------------|---|---------------------------------|
| 1 Display | 2 Remote window | 3 Input button |
| 4 Power switching button | 5 6.35mm headphone output | 6 4.4mm headphone output |
| 7 Knob | 8 Balanced output | 9 Coaxial input |
| 10 Optical input | 11 RCA output | 12 Bluetooth antenna |
| 13 USB Input | 14 Aux Power Supply* ^{Note} | |

Note:

1. This is the Aux power input, when you use phones to connect the USB, you need to connect a 5V DC power for avoiding the phone overcurrent ;
2. You cannot use the Quick-Charge power for this connector, because of the Quick-Charge power may output over 5V, which is dangerous for this unit !

Instructions

■ INPUTS

- USB
- BT
- OPT
- COA

■ DIMMER

- 5 seconds ~ 30 seconds

(The range is 5 seconds-30 seconds. After setting, the screen will automatically go off within this time, and the screen will re-light up if you operate the remote control or the knob at any time.)

■ OUTPUTS

- ALL
- LINE
- HP

■ PRE MODE

PRE MODE is the volume adjustment function switch for the output interface:

- VARIABLE: The output interface volume is controlled.
- FIXED : The volume of the output interface is fixed.



Instructions

■ FILTER

- F1 Fast and Low-latency filter
- F2 Fast and Phase-compensated filter
- F3 Slow and Low-latency filter
- F4 Slow and Phase -compensated filter
- F5 Nonoversampling filter

■ BRIGHTNESS

- LEVEL 1 ~ LEVEL 4

■ FN KEY FOR

- BLUETOOTH

Short press: Directly select Bluetooth input;

Long press: Bluetooth re-entry.

■ BTRESET

- In Bluetooth mode, enter menu 6-6 (basket tooth reset), at this time long press the remote control "up" button for 3 seconds, the implementation of Bluetooth reset, then you can match the Bluetooth phone again.

■ RESET

- In the power-off state, press and hold the knob and don't release it, then plug in the USB cable and perform the system reset

